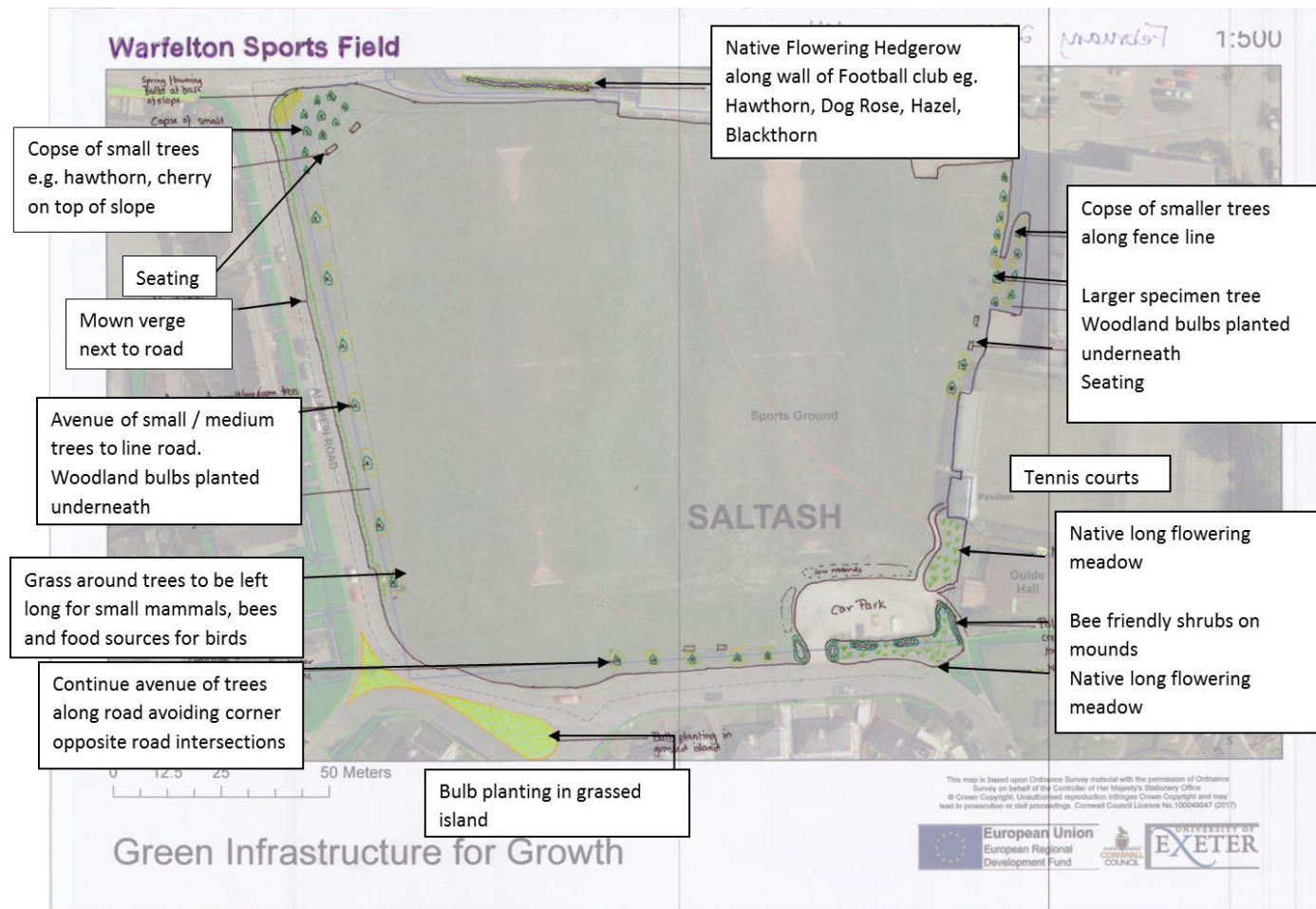


Cornwall's parks and sports fields – do you use them and what do you think?

WARFELTON FIELD, SALTASH

Thank you very much to everyone who commented on the changes we are planning for Warfelton Sports field. We delivered 70 questionnaires for comments to local houses and visited the park three times in spring 2018 when 5 questionnaires were given out to park users. We had 19 people who live near or use the park respond to our questionnaires and about 40 people came and looked at the plans at our on-site consultation!

The original design for the site is here –



Of the 19 people who responded to the questionnaire -

Overall **89%** of people agreed that the site would look better following the suggested changes.

89 % thought the changes would make the site better for wildlife.

83% of people thought the changes would make other people more likely to use this site and **50 %** said that they would be more likely to visit the site themselves.

You said, we did –

Of course people have different views and opinions and unfortunately we can't do everything everyone wants. We have read and considered all of the comments; we can't reply to them all but these are some comments and changes we made.

You said – The football club wall was considered to be unattractive

We did – We have extended the new native hedge on the plan to cover the entire wall, which will be good for wildlife and hopefully make it look nicer.

You said – There were concerns about vandalism and antisocial behaviour

We did – This is a really difficult issue. We have selected seating which is as vandal proof as possible and hardwearing so that it can be enjoyed for many years to come. We hope to talk to local primary and secondary schools to get the next generation involved in looking after their parks!

You said – Needs a play park here.

We did – Unfortunately we can't fund traditional play equipment as part of this project.

You said – A path around the edge of the field was requested, as it becomes muddy in winter and to join car parks.

We did – We have put in a surfaced path between the two car parks to make the site easier to walk through.

You said – People were concerned that bee friendly plants might lead to more bees which scare the children.

We did – Bee stings are really rare unless you sit or tread on a bee. Bees visiting plants to collect nectar and pollen are really unlikely to sting you unless you grab them! We hope to run some education events about bees to help children understand more about bees and be less scared.

You said – “Would be appreciated more if there were benches to sit for a while. Also for mums and dads to sit when watching football matches.”

We did – The plans include two benches and a family picnic table area which we hope will be used by people watching the football.

We anticipate that work will start on this site in 2018.

Any further questions, please get in touch with the GI4G team (GI4G@cornwall.gov.uk or 0300 1234 202)

This is based on comments received by 26/07/18

