

Pop Up Site Information Sheet

Jubilee Green, Old Ferry Road, Saltash,
PL12 6BJ



Disclaimers

The Particulars are provided as a guide only. The accuracy is not guaranteed and they should not be relied upon for any purpose. They do not form part of any contract.

Location

Saltash is known as the Gateway to Cornwall, as it lies just across the River Tamar from Plymouth. Jubilee Green is on the river Tamer by the boat park which is a popular entrance point to the river and the sea.

Description

- Concession area is up to 5m x 3m.
- The exact location of the pitch can be varied throughout the year to protect the grass.
- Area is marked in red on the plan.
- Sale of food and drink and services such as yoga, bootcamps, fitness classes etc.

****Please note that water based activity opportunities will need a separate water based activity licence****

Site information

- Large grass area between the car park and trailer park
- On the waters edge with beautiful views over the river Tamar
- Next to a free car park

We encourage all applicants to carry out a site inspection as well as to undertake their own investigations and risk/suitability assessments for their planned use.

Terms of Licence

The premises are available by way of a 1 year licence. We refer you to the draft Heads of Terms and draft Licence included in the tender pack.

Services

No services are available.

For more information and frequently asked questions please go to:

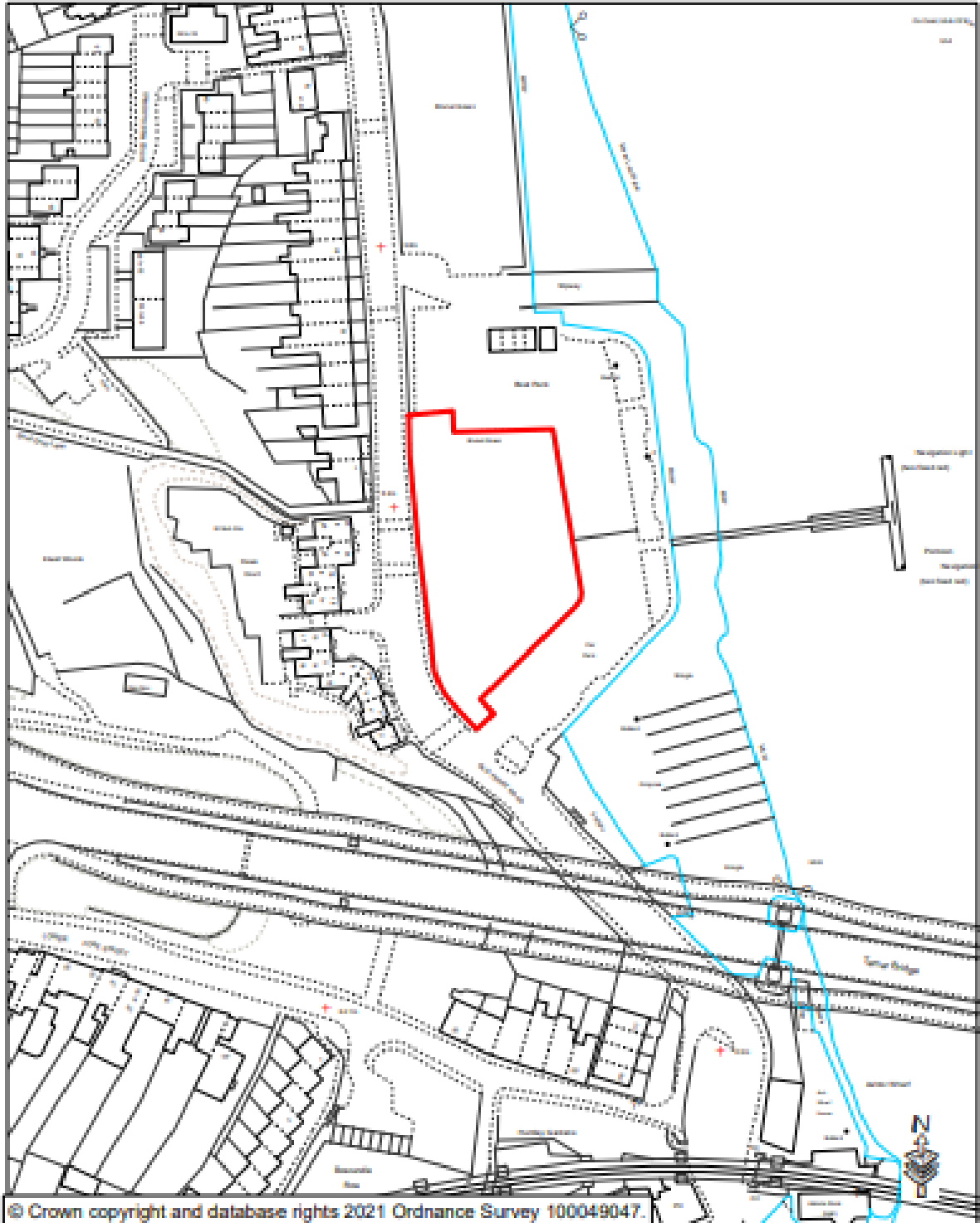
<https://www.cornwall.gov.uk/popupsites>

Disclaimers

The Particulars are provided as a guide only. The accuracy is not guaranteed and they should not be relied upon for any purpose. They do not form part of any contract.

Jubilee Green, Saltash

Scale 1:1,250 Paper Size: A4



Disclaimers

The Particulars are provided as a guide only. The accuracy is not guaranteed and they should not be relied upon for any purpose. They do not form part of any contract.