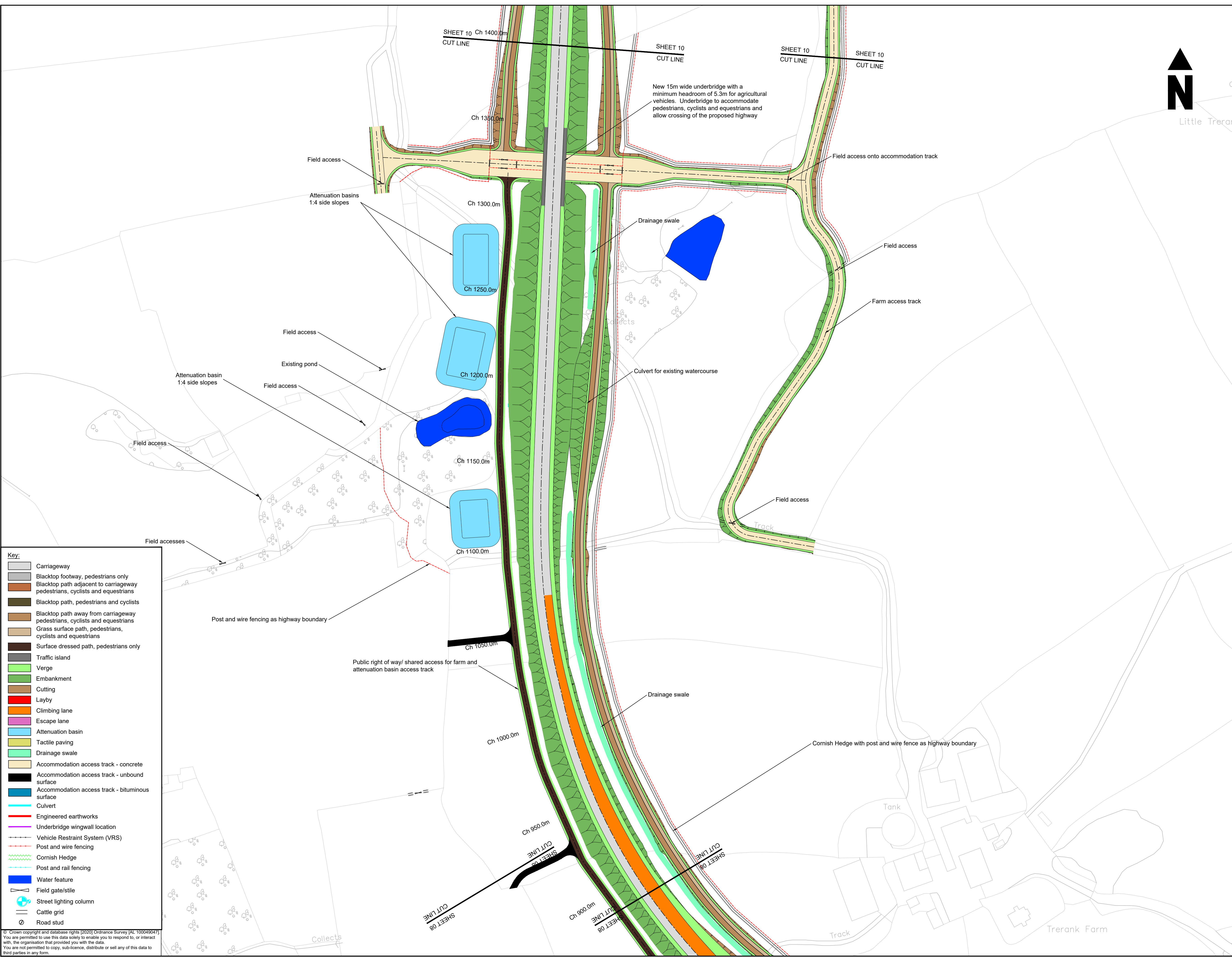


© This drawing is Copyright. It should not be relied on or used in circumstances other than those for which it was originally prepared and for which Cornwall Council was originally commissioned. Cornwall Council accepts no responsibility for this drawing to any party other than the person(s) by whom it was commissioned.

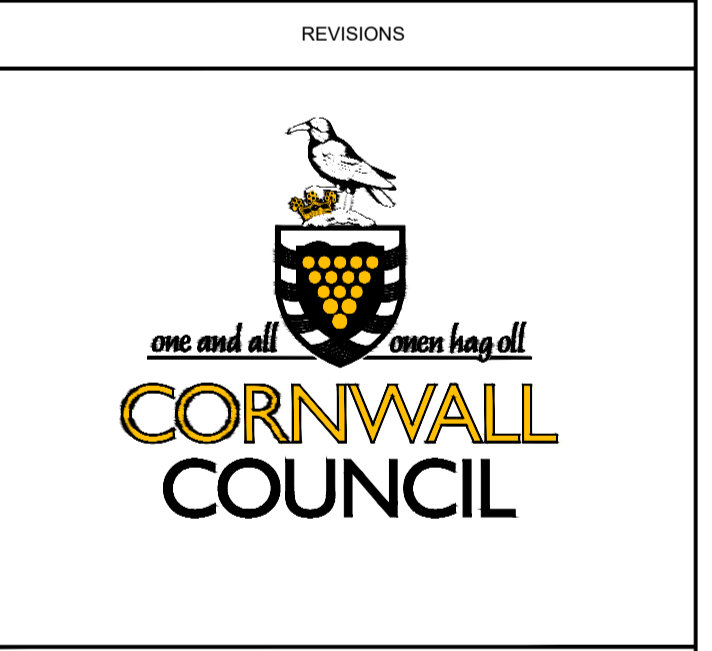
- NOTES:
- All dimensions are in metres unless otherwise stated.
 - Do not scale from this drawing.
 - Refer to Drawing 0718_CSL_GEN_00MZ_DR_CH_4000 for Key Plan.
 - For identified hazards and residual risks refer to the CDM Identified Hazards drawings, numbers 0718_CSL_GHS_00MZ_HS_CH_4000 to 4016 and the pre construction information document.



Key:

[Grey line]	Carriageway
[Dark grey line]	Blacktop footway, pedestrians only
[Light grey line]	Blacktop path adjacent to carriageway pedestrians, cyclists and equestrians
[Dark brown line]	Blacktop path, pedestrians and cyclists
[Medium brown line]	Blacktop path away from carriageway pedestrians, cyclists and equestrians
[Light brown line]	Grass surface path, pedestrians, cyclists and equestrians
[Dark brown line]	Surface dressed path, pedestrians only
[Light grey line]	Traffic island
[Green line]	Verge
[Green line]	Embankment
[Brown line]	Cutting
[Red line]	Layby
[Orange line]	Climbing lane
[Purple line]	Escape lane
[Blue rectangle]	Attenuation basin
[Yellow rectangle]	Tactile paving
[Green line]	Drainage swale
[Light brown rectangle]	Accommodation access track - concrete
[Black line]	Accommodation access track - unbound surface
[Dark blue rectangle]	Accommodation access track - bituminous surface
[Blue line]	Culvert
[Red line]	Engineered earthworks
[Purple line]	Underbridge wingwall location
[Dashed line]	Vehicle Restraint System (VRS)
[Dashed line]	Post and wire fencing
[Green line]	Cornish Hedge
[Dashed line]	Post and rail fencing
[Blue shape]	Water feature
[Symbol]	Field gate/stile
[Symbol]	Street lighting column
[Symbol]	Cattle grid
[Symbol]	Road stud

REV	DATE	NATURE OF REVISION
P02	06.03.20	ACCESS TRACKS AND SHARED PATH LOCATION
P01	27.02.19	First Issue



CORMAC SOLUTIONS
 RADNOR ROAD
 SCORRIER
 CORNWALL TR16 5EH
 www.cormactd.co.uk 01872 323 313

PROJECT TITLE:
ST AUSTELL TO A30 LINK ROAD

DRAWING TITLE:
**SERIES 0100
 GENERAL ARRANGEMENT
 SHEET 09 OF 13**

SCALE: 1:1000 @ A1

PROJECT MANAGER: E. MAGUIRE	DRAWN BY: TDS		
CHECKED: CM	06.03.20	APPROVED: EJM	06.03.20
DRAWING NO:		PROJECT REF: EDG0718	
PROJECT: 0718	ORIGINATOR: CSL	VOLUME: GEN	LOCATION: 09M2
TYPE: DR	ROLE: CH	NUMBER: 4009	SUITABILITY: D2
REVISION: P02.03	DRAWING STATUS: PRELIMINARY	SUITABILITY: D2	REVISION: P02.03

© Crown copyright and database rights [2020] Ordnance Survey [AL 100049647]. You are permitted to use this data solely to enable you to respond to, or interact with, the organisation that provided you with the data. You are not permitted to copy, sub-licence, distribute or sell any of this data to third parties in any form.