



# Your adoption journey



This map belongs to

This map has been created to help guide you through your adoption journey. If you have any questions or you feel like you need to talk, you can always get in touch with us...  
Email us at: [adoption@cornwall.gov.uk](mailto:adoption@cornwall.gov.uk)  
Call us on: **01872 322 200**

If you would like this information in another format or language please contact:  
Cornwall Council, County Hall  
Treyew Road, Truro TR1 3AY  
Telephone: 0300 1234 100  
Email: [enquiries@cornwall.gov.uk](mailto:enquiries@cornwall.gov.uk)  
[www.cornwall.gov.uk](http://www.cornwall.gov.uk)



## Your family

Families come in all shapes and sizes and everyone's family is different.

You could have two daddies, two mummies, a mum, a dad or a mum and dad. The most important thing is that both your social worker and the Adoption Panel are sure that your new family is the right one for you. But that doesn't mean you have to forget about your birth family.

Your social worker will give you a book with photos telling your story and you can tell your social worker who you want to keep in touch with. Your social worker will talk to you about how this can be arranged and, if it is right for you, your new family will also keep in contact with your birth family and let them know how you are.

Don't forget it is important to talk to your social worker or your foster carer about how you are feeling at any stage in your adoption journey, and the people who will know about your journey are social workers, the Children's Guardian, your birth family, the friends and relatives of your new family and your new head teacher.



## Getting help

If you need help or advice at any stage during your adoption journey, don't forget you can always talk to your social worker and your foster carer, who will be working together to help you.

### Did you know?

All sorts of people are adopted. Here are some famous people who were all adopted:

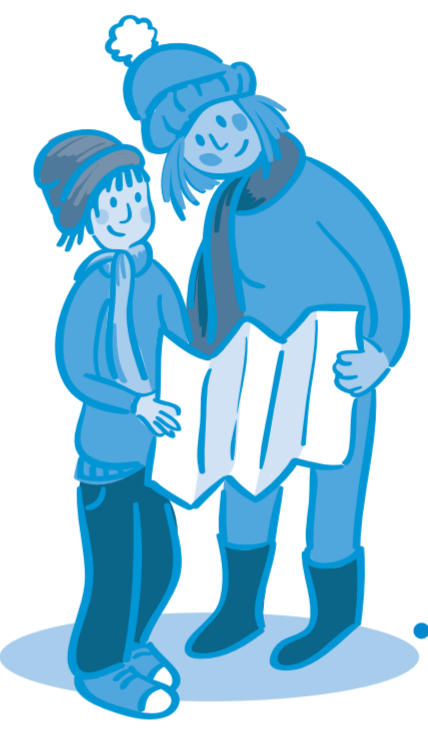
- **Nelson Mandela** (iconic leader)
- **John Lennon** (member of the Beatles)
- **Steve Jobs** (Apple founder)
- **Marilyn Monroe** (actor)
- **Jamie Foxx** (actor)
- **Keyshia Cole** (singer)
- **Eric Clapton** (musician)
- **Bill Clinton** (US President 1993 - 2001)
- **Angelina Jolie** (actor)
- **Charlize Theron** (actor)



## Your journey

Along your journey we promise to:

- help you understand what adoption means
- listen to what you are telling us about how you feel.
- do our best to make sure you don't have to wait too long for a new family.
- make sure the right decisions are made about staying in contact with your birth family. This might mean helping with visits or arranging for letters to be passed on.
- try our best to make sure you can live with your brothers and sisters if that is right for you.
- remember that your own family background, culture or religion are important to you.
- help you settle into your new family.
- offer help and support to your birth family.



Your social worker is

Telephone

Your foster carer is

Telephone

There will be others who you meet along the journey who will listen to you as well. If you have problems or concerns, here are some more people you can contact:

### Cornwall's Adoption Service

You can call us for advice or to talk on **01872 322 200**

You can email us at [adoption@cornwall.gov.uk](mailto:adoption@cornwall.gov.uk)

You can also write to us at **Cornwall Council and the Council of the Isles of Scilly Adoption Agency**, Old County Hall, Truro, TR1 3AY

### Childline

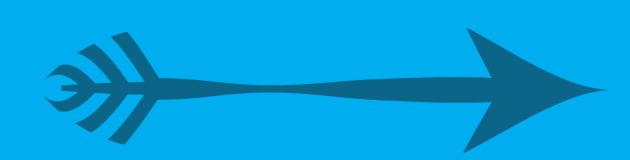
Childline is dedicated to protecting children and young people who are being abused and you can contact them confidentially any time if you need their help.

You can call them on **0800 11 11**

You can email them or chat online at [www.Childline.org.uk](http://www.Childline.org.uk)

# All children and young people should be able to grow up in a family where they are well cared for and feel safe.

## If the grown ups in your family haven't been able to do this for you, you may need to live with another family. To start with, this will be a foster family...



# Your adoption journey

## Did you know?

Moving to live with your new family will probably mean moving to a new area. Your new parents will make big decisions for you like where you will go to school.

**2** Sometimes there are other children or young people also being fostered in the home.

We try to make sure your foster family has a similar background to you.

If this isn't possible, then we will help them in understanding your background, culture and things like what you enjoy doing.

**3** Foster carers are people who want to look after children and have been specially trained to make sure they can take good care of children and young people who cannot live with their own families.

## Did you know?

If there are other children in your new family, they'll become your brothers and sisters. You may well get a bunch of new aunts, uncles, grandparents and other relatives as well!

**4** Whatever kind of foster family you have, they will do everything they can to make you feel welcome and a part of their family.

**5** Once you are settled with your foster family, your review meetings with your social worker will look at who you should live with long term.

## Did you know?

After you've been adopted, you will be a part of your new family, so you'll get a new surname as well. There might be other changes to the way you have done things in the past, so living with your new family can take a bit of practice.

**1** Foster families come in all shapes and sizes. Sometimes there is one parent, sometimes there are two. They may have children still living at home.

**7** A lot of work and thought goes into making sure that adoption is the right path for you.

**9** Once the decision is made, your social worker will look for the right family for you.

**10** Once your social worker thinks they have found a family, a special Adoption Panel will double check that it is the right one for you.

**8** The final decision will be made by a judge in court who has read everything about what has happened to you and who checks that you have been able to talk about what is happening to you.

**13** Your social worker will keep visiting you and your new family for a while to make sure you are happy..

If you can't return to your birth family, your social worker will talk with you about finding a new family.

**6**

**11** Before you meet them, your social worker will tell you all about the family you are going to live with - who lives there, what the house is like, what your room is like, and where you will eat, sleep and play. Your social worker will also show you some photos of the family and their house.

After that, you will be able to spend some time getting to know each other before you go and live with your new family.

**14** ...and when you and your family are ready, you will all be invited to Court to make your adoption official by Adoption Order.

**12**

