

Licensing Act 2003

Extract from Premises Licence Application relating to:-

**Co-op Food
Barras Street
Liskeard
PL14 6AD**

Part 3 – Proposed variation(s)

Please tick

Do you want the proposed variation to have effect as soon as possible? Yes No

DDMMYYYY

If not, from what date do you want the variation to take effect?

Do you want the proposed variation to have effect in relation to the introduction of the late night levy? (Please see Guidance Note 3) Yes No

Please describe the proposed variation(s) in detail in the box below and explain why you consider that they could not have an adverse effect on the promotion of any of the licensing objectives (See Guidance Note 1). This should include whether new or increased levels of licensable activities will be taking place indoors or outdoors (indoors may include a tent):

Details of proposed variation(s) (Please see Guidance Note 4)

We are making minor alterations to the store layout as detailed on the attached plan.

Installation of a new Assisted serve tills

These alterations will not have an adverse effect on the promotions of the licensing objectives.

The red line indicates the licensed area of the shop floor.

Details of proposed variation(s) (Continued)

Part 4 – Operating Schedule

Please tick those parts of the Operating Schedule which would be subject to change if this application to vary were successful.

Provision of regulated entertainment (please read guidance note 5)

Please tick all that apply

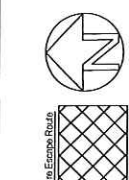
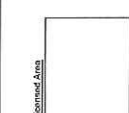
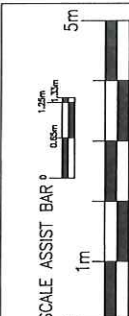
- a. plays
- b. films
- c. indoor sporting events
- d. boxing or wrestling entertainment
- e. live music
- f. recorded music
- g. performances of dance
- h. anything of a similar description to that falling within (e), (f) or (g)

Provision of late night refreshment

Supply of alcohol

(Note that this can only relate to reducing licensed hours, or moving them without any overall increase between 7am and 11pm)

Please tick to indicate you have enclosed the following:



Equality Guidelines
 Minimum 650mm pitch point
 Minimum 120mm turning circle
 Minimum 850mm gap behind the lock (frontline to backline)
 Leading edge on all-swing doors to be 300mm minimum
 To apply where possible

DATE OF THESE REGULATIONS TO BE PROMULGATED

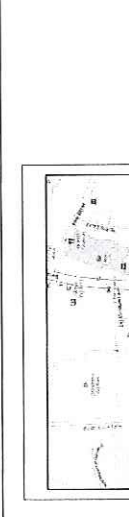
1	2	3	4	5	6	7	8	9	10	11	12

DATE OF THESE REGULATIONS TO BE PROMULGATED

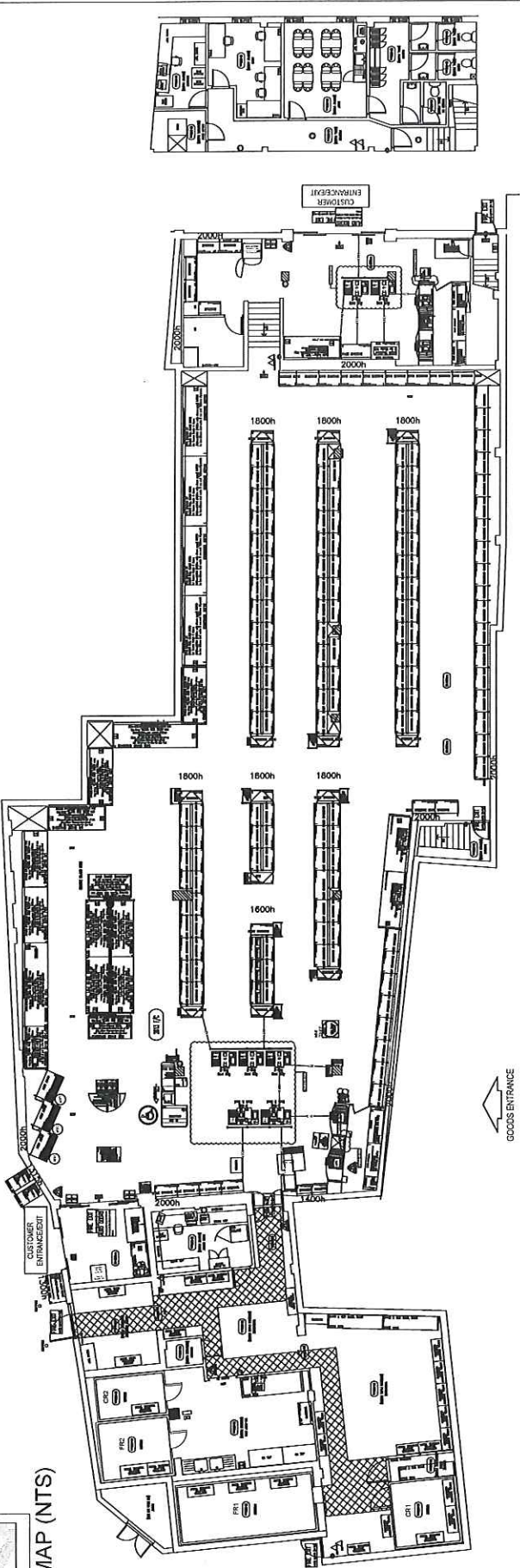
1	2	3	4	5	6	7	8	9	10	11	12

FIRE SAFETY
 Approved to BS 5839-1:2002

FIRE SIGNAGE
 Approved to BS 5446:1:2000



ORDNANCE SURVEY MAP (NTS)



SURVEY OVERLAIN

LISKEARD	
Barrow St	
Liskeard	
PL 4 6AD	
Store Phone No. 01773 342255	
Drawing Information	Revision
Drawn: MAM	Rev: 001
Checked: MAM	Rev: 002
Proposed: MAM	Rev: 003
Issue: MAM	Rev: 004
Issue: MAM	Rev: 005
Issue: MAM	Rev: 006
Issue: MAM	Rev: 007
Issue: MAM	Rev: 008
Issue: MAM	Rev: 009
Issue: MAM	Rev: 010
Issue: MAM	Rev: 011
Issue: MAM	Rev: 012
Issue: MAM	Rev: 013
Issue: MAM	Rev: 014
Issue: MAM	Rev: 015
Issue: MAM	Rev: 016
Issue: MAM	Rev: 017
Issue: MAM	Rev: 018
Issue: MAM	Rev: 019
Issue: MAM	Rev: 020
Issue: MAM	Rev: 021
Issue: MAM	Rev: 022
Issue: MAM	Rev: 023
Issue: MAM	Rev: 024
Issue: MAM	Rev: 025
Issue: MAM	Rev: 026
Issue: MAM	Rev: 027
Issue: MAM	Rev: 028
Issue: MAM	Rev: 029
Issue: MAM	Rev: 030
Issue: MAM	Rev: 031
Issue: MAM	Rev: 032
Issue: MAM	Rev: 033
Issue: MAM	Rev: 034
Issue: MAM	Rev: 035
Issue: MAM	Rev: 036
Issue: MAM	Rev: 037
Issue: MAM	Rev: 038
Issue: MAM	Rev: 039
Issue: MAM	Rev: 040
Issue: MAM	Rev: 041
Issue: MAM	Rev: 042
Issue: MAM	Rev: 043
Issue: MAM	Rev: 044
Issue: MAM	Rev: 045
Issue: MAM	Rev: 046
Issue: MAM	Rev: 047
Issue: MAM	Rev: 048
Issue: MAM	Rev: 049
Issue: MAM	Rev: 050
Issue: MAM	Rev: 051
Issue: MAM	Rev: 052
Issue: MAM	Rev: 053
Issue: MAM	Rev: 054
Issue: MAM	Rev: 055
Issue: MAM	Rev: 056
Issue: MAM	Rev: 057
Issue: MAM	Rev: 058
Issue: MAM	Rev: 059
Issue: MAM	Rev: 060
Issue: MAM	Rev: 061
Issue: MAM	Rev: 062
Issue: MAM	Rev: 063
Issue: MAM	Rev: 064
Issue: MAM	Rev: 065
Issue: MAM	Rev: 066
Issue: MAM	Rev: 067
Issue: MAM	Rev: 068
Issue: MAM	Rev: 069
Issue: MAM	Rev: 070
Issue: MAM	Rev: 071
Issue: MAM	Rev: 072
Issue: MAM	Rev: 073
Issue: MAM	Rev: 074
Issue: MAM	Rev: 075
Issue: MAM	Rev: 076
Issue: MAM	Rev: 077
Issue: MAM	Rev: 078
Issue: MAM	Rev: 079
Issue: MAM	Rev: 080
Issue: MAM	Rev: 081
Issue: MAM	Rev: 082
Issue: MAM	Rev: 083
Issue: MAM	Rev: 084
Issue: MAM	Rev: 085
Issue: MAM	Rev: 086
Issue: MAM	Rev: 087
Issue: MAM	Rev: 088
Issue: MAM	Rev: 089
Issue: MAM	Rev: 090
Issue: MAM	Rev: 091
Issue: MAM	Rev: 092
Issue: MAM	Rev: 093
Issue: MAM	Rev: 094
Issue: MAM	Rev: 095
Issue: MAM	Rev: 096
Issue: MAM	Rev: 097
Issue: MAM	Rev: 098
Issue: MAM	Rev: 099
Issue: MAM	Rev: 100

Exceptions
 Any items of the proposed fire fit not detailed in the schedule shall be detailed here along with the reasons why they are not included in the schedule.

Store Demographic:
 Store No: 1000
 Store Name: 1000
 Store Address: 1000
 Store Phone: 1000

Checklist Address:
 Address: 1000
 Postcode: 1000
 Date: 1000

Risk Rating:
 Risk Rating: 1000
 Risk Rating: 1000
 Risk Rating: 1000

Additional Equipment
 VNO
 Magazines
 Cards
 Impulse Contact
 Impulse CSN
 Pizza Shop
 ISB
 BVS Plinth
 Stand
 Chocery Press
 Rail Cages BCH
 Electrical Shelving
 Prisma Prints

COM Regulations 2015
 The objective of these regulations is to ensure that the fire fit is designed and installed in accordance with the requirements of the regulations. The regulations apply to all fire fits installed in premises where the fire fit is used to protect the premises from fire.

Standard Notes
 Please refer to the Approved Plans for details of the fire fit. The fire fit shall be installed in accordance with the requirements of the regulations. The fire fit shall be installed in accordance with the requirements of the regulations.

Labels:
 The fire fit shall be installed in accordance with the requirements of the regulations. The fire fit shall be installed in accordance with the requirements of the regulations.

Labels:
 The fire fit shall be installed in accordance with the requirements of the regulations. The fire fit shall be installed in accordance with the requirements of the regulations.

Labels:
 The fire fit shall be installed in accordance with the requirements of the regulations. The fire fit shall be installed in accordance with the requirements of the regulations.

Labels:
 The fire fit shall be installed in accordance with the requirements of the regulations. The fire fit shall be installed in accordance with the requirements of the regulations.

Labels:
 The fire fit shall be installed in accordance with the requirements of the regulations. The fire fit shall be installed in accordance with the requirements of the regulations.

SHOP FLOOR - 1:100