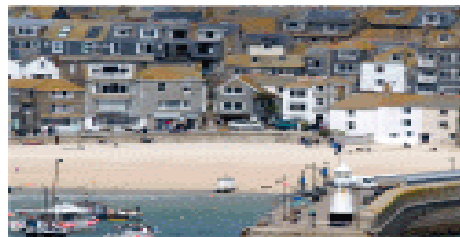
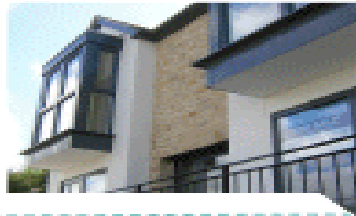


# Neighbourhood Planning

Update • January 2019

## Quick links

- [Current Consultations](#)
- [Government Legislation](#)
- [Toolkit and guide notes](#)
- [Other Information](#)
- [Town, Parish & City Council Online Mapping](#)



## Welcome to the Neighbourhood Planning e-bulletin for January 2019

The New Year has got off to a busy start with multiple designations received and plans submitted, with many other plans within the statutory process progressing through to being made. This year we are focussing on the quality of the guidance that we provide to Steering Groups. To that end, please be aware that the guidance notes on the Neighbourhood Planning webpage are being updated. We are also offering the opportunity for groups to meet with other service officers during the quarterly surgeries that we host, to ensure that we can support groups in producing high quality NDPs going forward. Melissa Burrow has been welcomed into the Neighbourhood Planning Team, and there will be some restructuring regarding named officers for Steering Groups. An email will follow in the coming weeks to update groups on this. We are looking forward to a productive year of Neighbourhood Planning across Cornwall.

Neighbourhood Planning Team

[www.cornwall.gov.uk](http://www.cornwall.gov.uk)

## Neighbourhood Planning Surgeries

The next round of Neighbourhood Planning surgeries will be held in March. This will provide Steering Groups with an opportunity to speak to Neighbourhood Planning officers about any queries and be provided with some guidance on the development of their plan. Each steering group can book a 45 minute slot, which will need to be booked advance. There will be the opportunity to speak to officers from other services within Cornwall Council if you book well in advance, and subject to officer availability.

If you are interested in attending one of the surgeries please e-mail the Neighbourhood Planning Team at [Neighbourhoodplanning@cornwall.gov.uk](mailto:Neighbourhoodplanning@cornwall.gov.uk).

The next round of surgeries will be held on the following dates, between 9am and 4pm:

- Friday 8<sup>th</sup> March- Dolcoath Offices, Camborne
- Wednesday 13<sup>th</sup> March- Pydar House, Truro
- Friday 15<sup>th</sup> March- Penwinnick House, St Austell
- Monday 18<sup>th</sup> March- Chy Trevail, Bodmin
- Wednesday 27<sup>th</sup> March- Luxstowe House, Liskeard
- Friday 29<sup>th</sup> March- St John's Hall, Penzance

## Neighbourhood Planning in Cornwall

**128**

### Town and Parish Councils submitted Designation Applications

**116**

### Designated Areas

This includes 5 cluster Neighbourhood Plans where two or more parishes are working together.

**39**

### Pre-Submission Consultations held

St Eval, Quethiock, Roseland Peninsula, St Ives, St Cleer, Bude-Stratton, St Minver Parishes, Rame Peninsula, Roche, Mevagissey, Gwinear-Gwithian, Feock, Withiel, North Hill, South Hill, St Erth, Liskeard, Falmouth, Lanlivery, Lanreath, St Mewan, Crantock, Hayle, Landrake and St Erney, Newquay, Lanner, Wadebridge with Egloshayle and St Breock, Illogan, Lostwithiel, Luxulyan, Polperro and Lansallos, St Agnes, Landulph, St Stephens by Launceston, Gwennap, Crowan, Chacewater, St Erme and Fowey

## Designations:

From the 1<sup>st</sup> October 2016, local authorities no longer need to publish designation applications and consult people who live, work or carry out business in the area as long as the application is in conformity with the parish boundary as set out in the Neighbourhood Planning Regulations 2012/16 5A (3).

Cornwall Council will continue to consult statutory organisations when designation applications are submitted. A report will be collated providing initial information and guidance from these organisations to support town or parish councils during the early stages of developing their Neighbourhood Plan.

Cubert Parish Council has designated the Parish as a Neighbourhood Area.

Gweek Parish Council has designated their Parish as a Neighbourhood Area.

## Strategic Environmental Assessment Screening (SEA):

Calstock NDP is currently being screened for SEA.

St Endellion NDP is currently being screened for SEA.

Ludgvan NDP is currently being screened for SEA.

Lezant NDP is currently being screened for SEA.

### 35

#### Plan Proposals Submitted

St Eval, Quethiock, Roseland Peninsula, St Ives, Truro and Kenwyn, St Minver Parishes, Bude-Stratton, Roche, Rame Peninsula, Gwinear-Gwithian, North Hill, South Hill, Lanreath, Feock, Mevagissey, St Erth, Withiel, Liskeard, St Mewan, Crantock, Hayle, Lanlivery, Landrake with St Erney, Newquay, Lanner, Polperro and Lansallos, Illogan, Lostwithiel, St Agnes, Chacewater, Luxulyan, Landulph, Crowan, St Stephen by Launceston and Fowey

### 27

#### Examinations held

St Eval, Quethiock, Roseland Peninsula, St Ives, Truro and Kenwyn, St Minver Parishes, Roche, Bude-Stratton, Rame Peninsula, Gwinear – Gwithian, North Hill, Lanreath, South Hill, Feock, Withiel, St Mewan, Mevagissey, Crantock, Hayle, St Erth, Liskeard, Landrake with St Erney, Lanlivery, Polperro and Lansallos, Lanner, Illogan

### 24

#### Referendums held

St Eval, Quethiock, Roseland Peninsula, St Ives, Truro & Kenwyn, Bude–Stratton, Rame Peninsula, St Minver Parishes, Roche, Gwinear-Gwithian, North Hill, South Hill, Lanreath, Feock, Withiel, St Mewan, Crantock, Hayle, St Erth, Mevagissey, Liskeard, Landrake with St Erney, Lanlivery, Polperro & Lansallos

### **Pre-Submission Consultation:**

[St Enoder NDP](#) is currently at Pre-submission consultation from 7<sup>th</sup> January to 18<sup>th</sup> February 2019.

### **Plan Proposals Statutory Consultation:**

[Chacewater](#) and [Luxulyan](#) NDPs Regulation 16 consultation will run from 20<sup>th</sup> December to 7<sup>th</sup> February 2019.

[Crowan NDP](#) Regulation 16 consultation will run from 7<sup>th</sup> January to 21<sup>st</sup> February 2019.

[Landulph NDP](#) Regulation 16 consultation will run from 8<sup>th</sup> January to 22<sup>nd</sup> February 2019.

[St Stephen by Launceston](#) Regulation 16 consultation will run from 30<sup>th</sup> January to 13<sup>th</sup> March.

### **Examination:**

[Newquay](#) and [St Agnes](#) NDPs are currently at examination. The independent Examiner is Deborah McCann.

[Illogan NDP](#) has now finished Examination. The Referendum date is yet to be confirmed.

### **Referendum:**

[Lanlivery](#), and [Polperro and Lansallos](#) NDPs are both going to referendum on 24 January 2019.

[Lanner](#) and [Lostwithiel](#) NDPs will be going to referendum on 21<sup>st</sup> February 2019.

### **Made Neighbourhood Plans:**

[Landrake with St Erney](#) NDP was formally made on 5 December 2018.

22

#### **Made Plans**

St Eval, Quethiock, Roseland Peninsula, St Ives, Truro and Kenwyn, Bude – Stratton, Rame Peninsula, Roche, St Minver Parishes, Gwinear-Gwithian, North Hill, South Hill, Lanreath, Feock, Withiel, St Mewan, Crantock, Hayle, St Erth, Mevagissey, Liskeard and Landrake with St Erney

For more information or if you would like to contact us please email the [Neighbourhood Planning Team](#).

#### **Neighbourhood Planning Toolkit links**

- [Neighbourhood Planning in Cornwall](#)
- [Neighbourhood Development Plan Proposals](#)
- [Neighbourhood Planning Examinations and Referendums](#)
- [Neighbourhood Planning Guide Notes and Templates](#)

## Toolkit and Guidance Notes

We have a number of [guidance notes](#) available on the toolkit including:

- [Wildlife, trees and woodland](#)
- [Sustainability Check \(Report Template and Guidance\)](#)
- [Design](#)
- [Flooding and Drainage](#)
- [Equalities Impact Assessment \(EQIA\)](#)
- [Principal Residence Policies](#)
- Funding and Support
- [Updated NDP Template](#)

## Government Legislation

There is currently no government legislation updates

## Other Information

[A briefing note on the recent Crantock decision has been placed on the website.](#)

## Useful web links

- [My Community](#)
- [Neighbourhood Planning Bill](#)
- [Cornwall Local Plan](#)
- [Neighbourhood Planning Roadmap Guide](#)
- [Neighbourhood Planning Regulations](#)
- [National Planning Policy Framework](#)
- [Upfront bulletin](#)
- [Cornwall Community Network Area](#)

