

## **Appendix B**

### **Hayle Accessibility Assessment**

## Accessibility Assessment – Hayle

Cell Number 1					
Type of Facility / Service	Proximity of nearest facility/service to Cell			Total Score	Comments/barriers
Town and neighbourhood centres (400 - 800 - 1200m)	400m	800m	1200m	3	Cell in closer proximity to Foundry TC than Copperhouse although access is constrained by harbour bridge route
Primary Schools (400 - 800 - 1200m)	400m	800m	1200m	3	Cell equal distance from both primary schools and harbour/bridge is a barrier to easy access as is the rail line
Secondary Schools (800 - 1200 - 1600m)	800m	1200m	1600m	3	The harbour/current bridge from North Quay to the town is a barrier to easy access as is the rail line
Open space Strategic & Public Open Space (400 - 800m)	400m	800m		3	There is a cricket pitch within the cell. Cell in close proximity and with good access to the beach and dunes
Health facilities (400 - 800m)	400m	800m		3	Not within easy walking distance. The harbour/current bridge from North Quay to the town is a barrier to easy access
Supermarkets (400 - 800m)	400m	800m		3	Not within easy walking distance. There is a proposal to locate a new supermarket on South Quay adjacent.
Employment areas (800 - 1200 - 1600m)	800m	1200m	1600m	3	The derelict north quay is proposed for future employment use. Current bridge is a barrier to the Foundry area.
<b>Vehicular Access</b>	<b>Comments</b>				
Deliverable vehicular <u>access</u> to serve the site area	Cell would be accessible from existing roads although routes are constrained i.e. bridge			3	<b>Total Score Calculation</b> 3 boxes – median or majority colour 2 boxes – median or lower coverage colour
Possible vehicular <u>connection</u> from the site area to the town centre	Connection through Phillack or across harbour bridge due to be upgraded				
<b>Any Other Comments/Summary</b>	Cell reasonably accessible to town centre, less accessible to schools. Key issue may be the barrier of the Harbour area - the existing bridge may be upgraded? Access through Phillack is v. constrained				
	<b>Whole of cell within distance</b>			<b>Overall Score</b>	
	> appr <sup>x</sup> 2/3 within		< appr <sup>x</sup> 1/3 within	3	Median or majority colour of Total Score boxes
	< appr <sup>x</sup> 2/3 > 1/3 within		None of cell within		

Cell Number 2						
Type of Facility / Service	Proximity of nearest facility/service to Cell			Total Score	Comments/barriers	
Town and neighbourhood centres (400 - 800 - 1200m)	400m	800m	1200m		Cell approx equal distance to both Foundry and Copperhouse TC's, although access is constrained by harbour bridge route	
Primary Schools (400 - 800 - 1200m)	400m	800m	1200m		Cell roughly equal distance form both primary schools and harbour/bridge is a barrier to easy access as is rail line	
Secondary Schools (800 - 1200 - 1600m)	800m	1200m	1600m		The harbour/current bridge form North Quay to the town is a barrier to easy access as is the rail line	
Open space Strategic & Public Open Space (400 - 800m)	400m	800m			Cell in close proximity and with good access to the beach and dunes	
Health facilities (400 - 800m)	400m	800m			Not within easy walking distance. The harbour/current bridge from North Quay to the town is a barrier to easy access	
Supermarkets (400 - 800m)	400m	800m			South east of the cell is within distance to the existing Co-op	
Employment areas (800 - 1200 - 1600m)	800m	1200m	1600m		The derelict north quay is proposed for future employment use. Current bridge is a barrier to the Foundry area.	
<b>Vehicular Access</b>	<b>Comments</b>					
Deliverable vehicular <u>access</u> to serve the site area	Cell would be accessible from existing roads although routes are constrained i.e. bridge				<b>Total Score Calculation</b> <b>3 boxes – median or majority colour</b> <b>2 boxes – median or lower coverage colour</b>	
Possible vehicular <u>connection</u> from the site area to the town centre	Connection through Phillack or across harbour bridge due to be upgraded					
<b>Any Other Comments/Summary</b>	Cell reasonably accessible to town centre, less accessible to schools. Key issue may be the barrier of the Harbour area - the existing bridge may be upgraded? Access through Phillack is v. constrained					
	<b>Whole of cell within distance</b>			<b>Overall Score</b>		
	> appr <sup>x</sup> 2/3 within		< appr <sup>x</sup> 1/3 within		Median or majority colour of Total Score boxes	
	< appr <sup>x</sup> 2/3 > 1/3 within		None of cell within			

Cell Number 3					
Type of Facility / Service	Proximity of nearest facility/service to Cell			Total Score	Comments/barriers
Town and neighbourhood centres (400 - 800 - 1200m)	400m	800m	1200m	3	Cell is within walking distance to the Copperhouse Town Centre via Lethlean Lane
Primary Schools (400 - 800 - 1200m)	400m	800m	1200m	2	Cell is closer to Bodriggy infant school although not within easy walking distance due to railway line which is a barrier
Secondary Schools (800 - 1200 - 1600m)	800m	1200m	1600m	3	West of the cell is within 1600m although potential route is not within easy walking distance due to railway line which is a barrier
Open space Strategic & Public Open Space (400 - 800m)	400m	800m		3	Cell is an area of dunes with access to the beach
Health facilities (400 - 800m)	400m	800m		2	Not within easy walking distance. The estuary and the rail line are barriers
Supermarkets (400 - 800m)	400m	800m		2	Cell (parts of) are within 800m walking distance to the co-op and lidl's. The A30 is a barrier to M&S
Employment areas (800 - 1200 - 1600m)	800m	1200m	1600m	2	Cell is closer in proximity to the existing employment areas at the east of the town, although the A30 is a barrier.
<b>Vehicular Access</b>	<b>Comments</b>				
Deliverable vehicular <u>access</u> to serve the site area	Cell would be accessible from existing roads although routes are constrained i.e. Phillack			3	<b>Total Score Calculation</b> 3 boxes – median or majority colour 2 boxes – median or lower coverage colour
Possible vehicular <u>connection</u> from the site area to the town centre	Connection through Phillack possible although need upgrading				
<b>Any Other Comments/Summary</b>	Cell reasonably accessible to town centre, less accessible to schools. Key issue being access through Phillack which is v. constrained. The Harbour area is also a barrier- the existing bridge may be upgraded?				
	<b>Whole of cell within distance</b>			<b>Overall Score</b>	
	> appr <sup>x</sup> 2/3 within	< appr <sup>x</sup> 1/3 within		3	Median or majority colour of Total Score boxes
	< appr <sup>x</sup> 2/3 > 1/3 within	None of cell within			

Cell Number 4						
Type of Facility / Service	Proximity of nearest facility/service to Cell			Total Score	Comments/barriers	
Town and neighbourhood centres (400 - 800 - 1200m)	400m	800m	1200m	[Red]	Cell not within easy walking access to the Copperhouse TC	
	[Red]	[Red]	[Red]			
Primary Schools (400 - 800 - 1200m)	400m	800m	1200m	[Red]	Cell is on the northern periphery of the town an is not within easy walking distance to the primary schools	
	[Red]	[Red]	[Red]			
Secondary Schools (800 - 1200 - 1600m)	800m	1200m	1600m	[Red]	Cell is on the northern periphery of the town an is not within easy walking distance to the Secondary school	
	[Red]	[Red]	[Red]			
Open space Strategic & Public Open Space (400 - 800m)	400m	800m		[Green]	Cell is in close proximity/adjacent to informal open space of the towans	
	[Green]	[Green]				
Health facilities (400 - 800m)	400m	800m		[Red]	Cell is on the northern periphery of the town an is not within easy walking distance to existing health facilities	
	[Red]	[Red]				
Supermarkets (400 - 800m)	400m	800m		[Red]	Southern tip is within 800m of the lidl and M&S although the A30 is a barrier to the M&S	
	[Red]	[Orange]				
Employment areas (800 - 1200 - 1600m)	800m	1200m	1600m	[Yellow]	Cell is within walking distance to employment areas at the east of the town. The A30 is a barrier	
	[Orange]	[Green]	[Green]			
<b>Vehicular Access</b>	<b>Comments</b>				<b>Total Score Calculation</b> <b>3 boxes - median or majority colour</b> <b>2 boxes - median or lower coverage colour</b>	
Deliverable vehicular <u>access</u> to serve the site area	Cell could be accessed from Loggans Road			[Orange]		
Possible vehicular <u>connection</u> from the site area to the town centre	Town centre could be accessed from along Loggans Road - may need upgrade/junctions			[Orange]		
<b>Any Other Comments/Summary</b>	Cell scores poorly on accessibility, in particular due to its peripheral location and distance from the town centres and schools					
	[Green]	<b>Whole of cell within distance</b>			<b>Overall Score</b>	
	[Green]	> appr <sup>x</sup> 2/3 within	[Orange]	< appr <sup>x</sup> 1/3 within	[Orange]	<b>Median or majority colour of Total Score boxes</b>
	[Yellow]	< appr <sup>x</sup> 2/3 > 1/3 within	[Red]	None of cell within	[Orange]	

Cell Number 5					
Type of Facility / Service	Proximity of nearest facility/service to Cell			Total Score	Comments/barriers
	400m	800m	1200m		
Town and neighbourhood centres (400 - 800 - 1200m)					Southern half of cell within 1200m of the Copperhouse TC. Route along Loggan's rd as A30 is a barrier on eastern boundary of cell
Primary Schools (400 - 800 - 1200m)					Cell not within easy walking distance at the north east edge of the town. Adjacent A30 is a barrier
Secondary Schools (800 - 1200 - 1600m)					Cell not within easy walking distance at the north east edge of the town. Adjacent A30 is a barrier
Open space Strategic & Public Open Space (400 - 800m)	400m		800m		
Health facilities (400 - 800m)	400m		800m		
Supermarkets (400 - 800m)	400m		800m		
Employment areas (800 - 1200 - 1600m)	800m		1200m		
<b>Vehicular Access</b>	<b>Comments</b>				
Deliverable vehicular <u>access</u> to serve the site area	Cell could be accessed from Loggans Road, Carwin Rise/A30 may not warrant access				<b>Total Score Calculation</b> 3 boxes – median or majority colour 2 boxes – median or lower coverage colour
Possible vehicular <u>connection</u> from the site area to the town centre	Town centre could be accessed from along Loggans Road – may need upgrade/junctions				
<b>Any Other Comments/Summary</b>	Cell scores relatively poorly on accessibility in particular to the town centre and schools. The cell is contained by the A30 and Carwin Rise roundabout access onto which would be unlikely and therefore a constraint				
	<b>Whole of cell within distance</b>			<b>Overall Score</b>	
	> appr <sup>x</sup> 2/3 within		< appr <sup>x</sup> 1/3 within		
	< appr <sup>x</sup> 2/3 > 1/3 within		None of cell within		
	Median or majority colour of Total Score boxes				

Cell Number 6					
Type of Facility / Service	Proximity of nearest facility/service to Cell			Total Score	Comments/barriers
Town and neighbourhood centres (400 - 800 - 1200m)	400m	800m	1200m		The A30 is a barrier to safe/easy access to the Copperhouse Town centre
Primary Schools (400 - 800 - 1200m)	400m	800m	1200m		Cell is closer to Connor Downs Primary School although access along Carwen Rise is not safe/easy for pedestrians
Secondary Schools (800 - 1200 - 1600m)	800m	1200m	1600m		Cell is isolated from the secondary school. The A30 is a barrier to easy/safe access.
Open space Strategic & Public Open Space (400 - 800m)	400m	800m			An area of informal open space is adjacent over the A30, however the A30 is a clear barrier to enable access to this
Health facilities (400 - 800m)	400m	800m			Cell is isolated from existing health facilities. The A30 is a barrier to easy/safe access.
Supermarkets (400 - 800m)	400m	800m			Cell is within 800m walking distance to the M&S and Lidl although the A30 is a barrier to easy/safe pedestrian movement
Employment areas (800 - 1200 - 1600m)	800m	1200m	1600m		Cell is within 800m walking distance of sites at east of the town although the A30 is a barrier to easy/safe pedestrian movement
<b>Vehicular Access</b>	<b>Comments</b>				
Deliverable vehicular <u>access</u> to serve the site area	Cell access could be made from Carwin Rise				<b>Total Score Calculation</b> 3 boxes – median or majority colour 2 boxes – median or lower coverage colour
Possible vehicular <u>connection</u> from the site area to the town centre	Town centre could be accessed from Carwin Rise				
<b>Any Other Comments/Summary</b>	Cell scores relatively poorly on accessibility in particular to the town centre and schools. Road access could in theory be made off Carwin Rise although pedestrian access to the town is constrained by the A30 and Marsh Lane roundabout which act as barriers to pedestrian movement				
	<b>Whole of cell within distance</b>			<b>Overall Score</b>	
	> appr <sup>x</sup> 2/3 within		< appr <sup>x</sup> 1/3 within		Median or majority colour of Total Score boxes
	< appr <sup>x</sup> 2/3 > 1/3 within		None of cell within		

Cell Number 7						
Type of Facility / Service	Proximity of nearest facility/service to Cell			Total Score	Comments/barriers	
Town and neighbourhood centres (400 - 800 - 1200m)	400m	800m	1200m	3	Cell is not within easy access to the Copperhouse town centre due to distance and the A30 creating a barrier	
Primary Schools (400 - 800 - 1200m)	400m	800m	1200m	3	Cell is closer to Connor Downs Primary School, access along Carwen Rise is not safe/easy for pedestrians. A30 is a barrier	
Secondary Schools (800 - 1200 - 1600m)	800m	1200m	1600m	3	Cell is isolated from the secondary school. The A30 is a barrier to easy/safe access. A route along Nanpusker Rd & Viaduct Hill	
Open space Strategic & Public Open Space (400 - 800m)	400m	800m		3	Close to formal facilities i.e. cell is adjacent to Hayle Rugby ground & close to the golf range	
Health facilities (400 - 800m)	400m	800m		3	Cell is isolated from health facilities. A30 is a barrier. Access along Nanpusker Rd, Viaduct Hill & High Lanes	
Supermarkets (400 - 800m)	400m	800m		3	Cell is adjacent to the M&S and close to the Lidl. The A30 is a barrier to the Lidl/town	
Employment areas (800 - 1200 - 1600m)	800m	1200m	1600m	3	Cell is adjacent to the Marsh Lane employment area and close to areas at the east of town. A30 is a barrier to the town	
<b>Vehicle Access</b>	<b>Comments</b>				<b>Total Score Calculation</b> <b>3 boxes – median or majority colour</b> <b>2 boxes – median or lower coverage colour</b>	
Deliverable vehicular <u>access</u> to serve the site area	Cell accessible from Marsh Lane, capacity issues on A30/Carwin Rise roundabout			2		
Possible vehicular <u>connection</u> from the site area to the town centre	Town centre connection from Marsh Lane, capacity issues on A30/Carwin Rise roundabout			2		
<b>Any Other Comments/Summary</b>	Cell scores relatively poor in relation to access to town centre and schools but better in relation to employment area and supermarkets. The A30 and Marsh Lane roundabout however act as barriers to pedestrian movement and accessibility into the town.					
	<b>Whole of cell within distance</b>			<b>Overall Score</b>		
	> appr <sup>x</sup> 2/3 within	< appr <sup>x</sup> 1/3 within		Median or majority colour of Total Score boxes		
	< appr <sup>x</sup> 2/3 > 1/3 within	None of cell within				



Cell Number 8					
Type of Facility / Service	Proximity of nearest facility/service to Cell			Total Score	Comments/barriers
Town and neighbourhood centres (400 - 800 - 1200m)	400m	800m	1200m	Orange	Cell is 1200m although is isolated from the town by the A30 and rail line. Access is along Wheal Alfred Rd or Nanpusker Rd
	Red	Red	Green		
Primary Schools (400 - 800 - 1200m)	400m	800m	1200m	Red	Cell is closer to Bodriggy infant school although A30 and rail line act as a barrier
	Red	Red	Orange		
Secondary Schools (800 - 1200 - 1600m)	800m	1200m	1600m	Orange	Cell is within 1600m of the school although A30 and rail line act as barriers
	Red	Orange	Yellow		
Open space Strategic & Public Open Space (400 - 800m)	400m		800m	Green	Large area of the cell is the golf range. Close to Hayle football club
	Green		Green		
Health facilities (400 - 800m)	400m		800m	Red	Cell is isolated from existing health facilities, the A30 and rail line act as barriers
	Red		Red		
Supermarkets (400 - 800m)	400m		800m	Orange	Some of cell within 800m of M&S and Lidl. A30 and rail line act as barrier to easy access
	Red		Yellow		
Employment areas (800 - 1200 - 1600m)	800m	1200m	1600m	Green	Cell close to employment areas at east of the town although A30 and rail line act as barriers to easy access
	Green	Green	Green		
<b>Vehicular Access</b>	<b>Comments</b>				
Deliverable vehicular <u>access</u> to serve the site area	Could be accessed from Wheal Alfred Rd, Nanpusker Rd also but more constrained			Orange	<b>Total Score Calculation</b> 3 boxes – median or majority colour 2 boxes – median or lower coverage colour
Possible vehicular <u>connection</u> from the site area to the town centre	Potential connections along Wheal Alfred Rd, Nanpusker Rd, upgrades would be needed				
<b>Any Other Comments/Summary</b>	A key issue regarding this cell is the barriers created by the A30 and rail line which constrain opportunities for movement into the town and reduces accessibility to the town centre and schools				
	Green	<b>Whole of cell within distance</b>		<b>Overall Score</b>	
	Green	> aprx 2/3 within	Orange	< aprx 1/3 within	Orange
	Yellow	< aprx 2/3 > 1/3 within	Red	None of cell within	
					Median or majority colour of Total Score boxes

Cell Number 9						
Type of Facility / Service	Proximity of nearest facility/service to Cell			Total Score	Comments/barriers	
	400m	800m	1200m			
Town and neighbourhood centres (400 - 800 - 1200m)					Cell is in close proximity to the Copperhouse TC, the rail line is a barrier, access is along Chapel Lane.	
Primary Schools (400 - 800 - 1200m)					Bodriggy infant school is adjacent to the cell with good access. Penpol school also within 1200m.	
Secondary Schools (800 - 1200 - 1600m)					Cell in close proximity to the secondary school with access along High lanes	
Open space Strategic & Public Open Space (400 - 800m)	400m		800m			Hayle football club is located within the cell. Golf range is within close proximity
Health facilities (400 - 800m)	400m		800m			Over half the cell is within 800m of the health centre on Queens Way
Supermarkets (400 - 800m)	400m		800m			North of cell within 800m of the co op although rail line is a barrier
Employment areas (800 - 1200 - 1600m)	800m		1200m			Cell within close proximity to employment areas at the east of the town although rail line is a barrier. Good access Viaduct Hill
<b>Vehicular Access</b>	<b>Comments</b>					
Deliverable vehicular <u>access</u> to serve the site area	Access from High Lanes/Viaduct Hill/ Strawberry Ln, rail line is a barrier however					<b>Total Score Calculation</b> 3 boxes – median or majority colour 2 boxes – median or lower coverage colour
Possible vehicular <u>connection</u> from the site area to the town centre	Connection from High Lanes/Viaduct Hill/ Strawberry Ln, rail line is a barrier however					
<b>Any Other Comments/Summary</b>	This cell scores will in terms of pedestrian accessibility in particular in relation to the town centres and schools. Issues are the barrier created by the rail line and capacity for vehicular traffic into the town					
	<b>Whole of cell within distance</b>			<b>Overall Score</b>		
	> appr <sup>x</sup> 2/3 within		< appr <sup>x</sup> 1/3 within			Median or majority colour of Total Score boxes
	< appr <sup>x</sup> 2/3 > 1/3 within		None of cell within			

Cell Number 10					
Type of Facility / Service	Proximity of nearest facility/service to Cell			Total Score	Comments/barriers
Town and neighbourhood centres (400 - 800 - 1200m)	400m	800m	1200m		Good proximity and access to the Foundry TC along Penpol Rd (particulary at east). Also access to Copperhouse at the west
Primary Schools (400 - 800 - 1200m)	400m	800m	1200m		Penpol school is adjacent to the cell and there is also good access to Bodriggy infant school
Secondary Schools (800 - 1200 - 1600m)	800m	1200m	1600m		Hayel secondary school is adjacent to the cell at the north
Open space Strategic & Public Open Space (400 - 800m)	400m	800m			Good access to Millpond avenue and playing fields at Penpol avenue
Health facilities (400 - 800m)	400m	800m			Good access to the health centres at Foundry Hill and Queens Way
Supermarkets (400 - 800m)	400m	800m			Cell is not within easy walking distance to the supermarkets at the east of Hayle.(There is a proposal for a further supermarket)
Employment areas (800 - 1200 - 1600m)	800m	1200m	1600m		Cell in good proximity to Foundry employment area
<b>Vehicular Access</b>	<b>Comments</b>				
Deliverable vehicular <u>access</u> to serve the site area	Access along St Georges Rd/High lanes. Penpol to Foundry area capacity issues				<b>Total Score Calculation</b> <b>3 boxes – median or majority colour</b> <b>2 boxes – median or lower coverage colour</b>
Possible vehicular <u>connection</u> from the site area to the town centre	Connection from Penpol Rd to the Foundry, capacity issues may be an issue				
<b>Any Other Comments/Summary</b>	Cell scores will in relation to access for pedestrians to schools and the town centre in particular the Foundry area. Issues are capacity for vehicular movements into the town / cell along Penpol Rd				
	<b>Whole of cell within distance</b>			<b>Overall Score</b>	
	> appr <sup>x</sup> 2/3 within		< appr <sup>x</sup> 1/3 within		Median or majority colour of Total Score boxes
	< appr <sup>x</sup> 2/3 > 1/3 within		None of cell within		

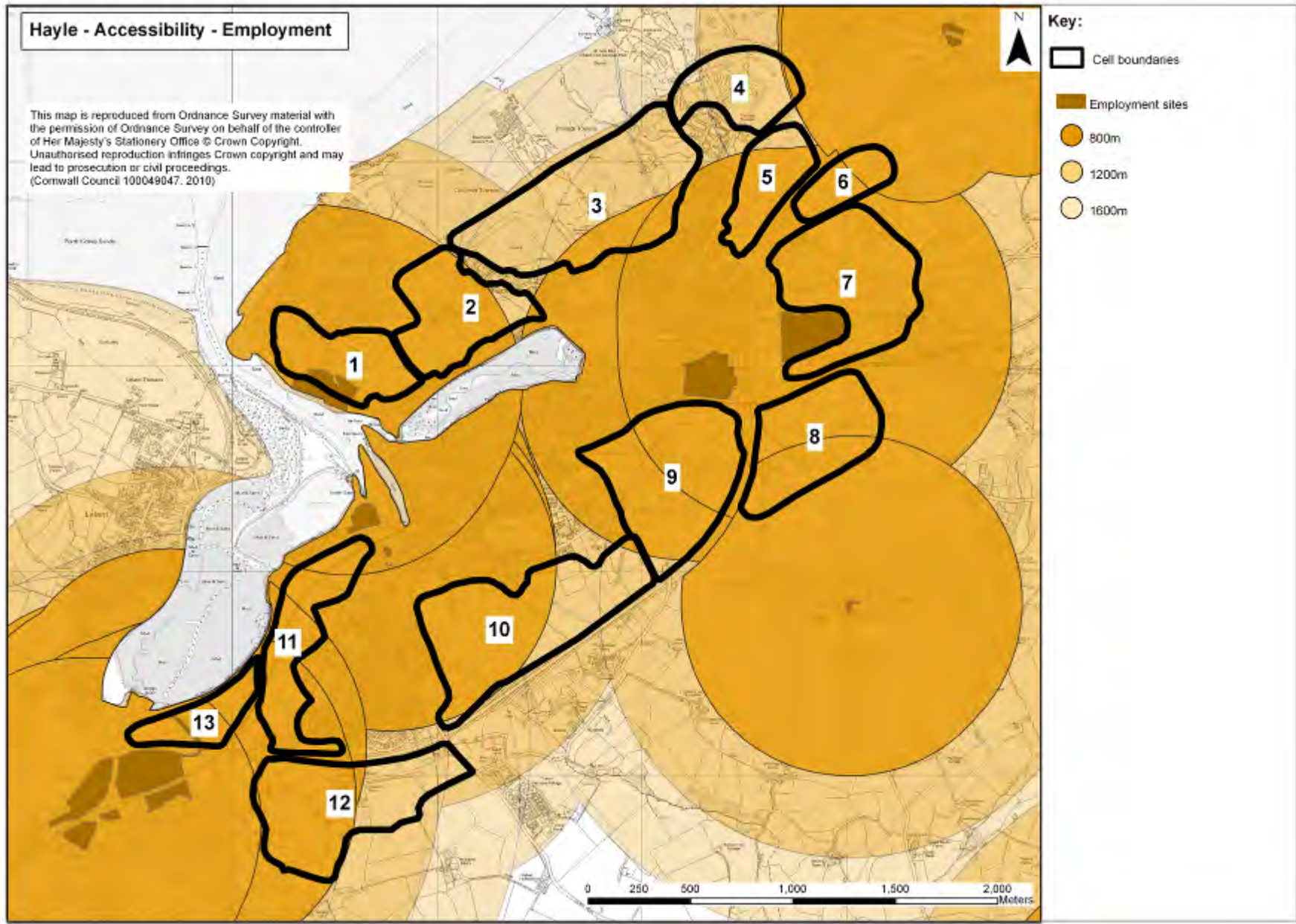
Cell Number 11					
Type of Facility / Service	Proximity of nearest facility/service to Cell			Total Score	Comments/barriers
Town and neighbourhood centres (400 - 800 - 1200m)	400m	800m	1200m	Yellow	Good access to the Foundry TC particularly at the north of cell which is adjacent
	Orange	Yellow	Green		
Primary Schools (400 - 800 - 1200m)	400m	800m	1200m	Yellow	North of cell has good access to Penpol School. Rail line through cell is a barrier for west of cell
	Orange	Yellow	Green		
Secondary Schools (800 - 1200 - 1600m)	800m	1200m	1600m	Yellow	Good access to Hayle school from north of cell although rail line through cell is a barrier
	Red	Orange	Green		
Open space Strategic & Public Open Space (400 - 800m)	400m		800m	Green	Allotments exist adjacent to the cell
	Green		Green		
Health facilities (400 - 800m)	400m		800m	Yellow	In close proximity to health centre on Foundry Hill. Rail line through cell is a barrier
	Yellow		Yellow		
Supermarkets (400 - 800m)	400m		800m	Red	Not within walking distance to supermarkets at east of town. There is a proposal for a further supermarket in Hayle.
	Red		Red		
Employment areas (800 - 1200 - 1600m)	800m	1200m	1600m	Green	Good proximity to employment areas at Foundry and St Erth although rail line and A30 are barriers to pedestrian movement
	Green	Green	Green		
<b>Vehicular Access</b>	<b>Comments</b>				
Deliverable vehicular <u>access</u> to serve the site area	Access could be made from Carnsew Road			Orange	<b>Total Score Calculation</b> <b>3 boxes – median or majority colour</b> <b>2 boxes – median or lower coverage colour</b>
Possible vehicular <u>connection</u> from the site area to the town centre	Connection to Foundry TC would be along Carnsew Road (if access made / new junction)			Orange	
<b>Any Other Comments/Summary</b>	Cell in particular the northern half scores well in relation to pedestrian accessibility to the Foundry town centre and schools. The rail line splits the cell in two which is an issue for movement within the cell				
	<b>Whole of cell within distance</b>			<b>Overall Score</b>	
	Green > appr <sup>x</sup> 2/3 within		Orange < appr <sup>x</sup> 1/3 within	Yellow	Median or majority colour of Total Score boxes
	Yellow < appr <sup>x</sup> 2/3 > 1/3 within		Red None of cell within		

Cell Number 12					
Type of Facility / Service	Proximity of nearest facility/service to Cell			Total Score	Comments/barriers
Town and neighbourhood centres (400 - 800 - 1200m)	400m	800m	1200m	Red	Cell not within easy walking distance to the Foundry TC and the A30 is a barrier to connectivity to the town
	Red	Red	Orange		
Primary Schools (400 - 800 - 1200m)	400m	800m	1200m	Yellow	Relatively good proximity to St Erth primary School along Trenhayle Lane, although lane is constrained
	Orange	Green	Green		
Secondary Schools (800 - 1200 - 1600m)	800m	1200m	1600m	Red	East of cell within 1600m although A30 is a barrier to connectivity to the town
	Red	Red	Orange		
Open space Strategic & Public Open Space (400 - 800m)	400m		800m	Green	Penwith pitch and putt is within the western part of the cell
	Green		Green		
Health facilities (400 - 800m)	400m		800m	Red	Not within easy walking distance to health facility at Foundry Hill, A30 is a Barrier
	Red		Orange		
Supermarkets (400 - 800m)	400m		800m	Red	Not within walking distance to supermarkets at east of Hayle (there is a proposal for a further supermarket in Hayle)
	Red		Red		
Employment areas (800 - 1200 - 1600m)	800m	1200m	1600m	Green	Relatively good proximity to St Erth employment area although A30 is a barrier - (access through St Erth)
	Yellow	Green	Green		
<b>Vehicular Access</b>	<b>Comments</b>				
Deliverable vehicular <u>access</u> to serve the site area	Access could be made off Mellanear Rd, Trenhayle Ln would need upgrade, A30 barrier			Orange	<b>Total Score Calculation</b> 3 boxes - median or majority colour 2 boxes - median or lower coverage colour
Possible vehicular <u>connection</u> from the site area to the town centre	Poss connection along Mellaner Rd / Foundry Hill although obvious capacity issues on route				
<b>Any Other Comments/Summary</b>	Cell is cut off from the town by the A30 and due to its location scores relatively poorly in relation to the town centre and secondary schools. Closest school is St Erth. Key issue is the poor connectivity to the town due to being south of the A30 and only one route Mellanera Rd across.				
	<b>Whole of cell within distance</b>			<b>Overall Score</b>	
	Green > appr <sup>x</sup> 2/3 within		Orange < appr <sup>x</sup> 1/3 within	Orange	Median or majority colour of Total Score boxes
	Yellow < appr <sup>x</sup> 2/3 > 1/3 within		Red None of cell within		

Cell Number 13					
Type of Facility / Service	Proximity of nearest facility/service to Cell			Total Score	Comments/barriers
Town and neighbourhood centres (400 - 800 - 1200m)	400m	800m	1200m	3	Small area of cell within 1200 m of Foundry TC although generally not within easy walking distance
Primary Schools (400 - 800 - 1200m)	400m	800m	1200m	2	Within 1200m of Penpol and St Erth Schools although access is constrained by rail line and A30
Secondary Schools (800 - 1200 - 1600m)	800m	1200m	1600m	1	Not within distance of the secondary school. A30 and rail line are barriers to connectivity
Open space Strategic & Public Open Space (400 - 800m)	400m	800m		2	Golf range and allotments within 800m although A30 and rail line are barriers to connectivity
Health facilities (400 - 800m)	400m	800m		1	Not within easy walking distance to health facility at Foundry Hill, A30 and rail line are Barriers
Supermarkets (400 - 800m)	400m	800m		1	Not within walking distance to supermarkets at east of Hayle (there is a proposal for a further supermarket in Hayle)
Employment areas (800 - 1200 - 1600m)	800m	1200m	1600m	2	Good proximity to St Erth employment area although A30 is a barrier to pedestrian access
<b>Vehicular Access</b>	<b>Comments</b>				
Deliverable vehicular <u>access</u> to serve the site area	Access could poss be made off the Causeway / Carnsew			2	<b>Total Score Calculation</b> 3 boxes – median or majority colour 2 boxes – median or lower coverage colour
Possible vehicular <u>connection</u> from the site area to the town centre	Along the Causeway / Carnsew Rd				
<b>Any Other Comments/Summary</b>	Cell scores poorly in relation to its peripheral location in particular to the town centre and schools. Cell is cut off from the town.				
	<b>Whole of cell within distance</b>			<b>Overall Score</b>	
	> appr <sup>x</sup> 2/3 within		< appr <sup>x</sup> 1/3 within	2	Median or majority colour of Total Score boxes
	< appr <sup>x</sup> 2/3 > 1/3 within		None of cell within		

# Hayle - Accessibility - Employment

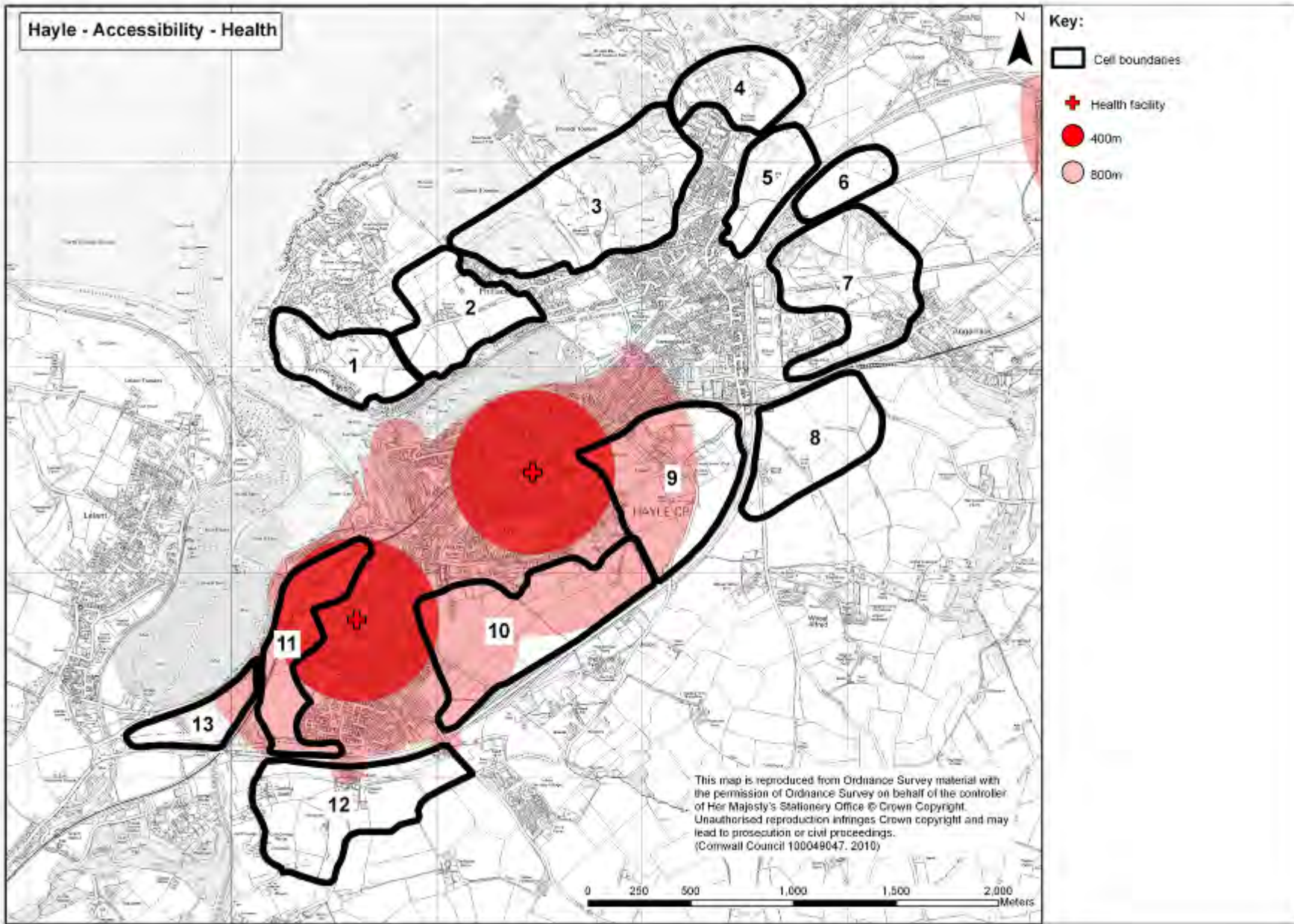
This map is reproduced from Ordnance Survey material with the permission of Ordnance Survey on behalf of the controller of Her Majesty's Stationery Office © Crown Copyright. Unauthorised reproduction infringes Crown copyright and may lead to prosecution or civil proceedings. (Cornwall Council 100049047, 2010)



## Key:

- Cell boundaries
- Employment sites
- 800m
- 1200m
- 1800m

# Hayle - Accessibility - Health



## Key:

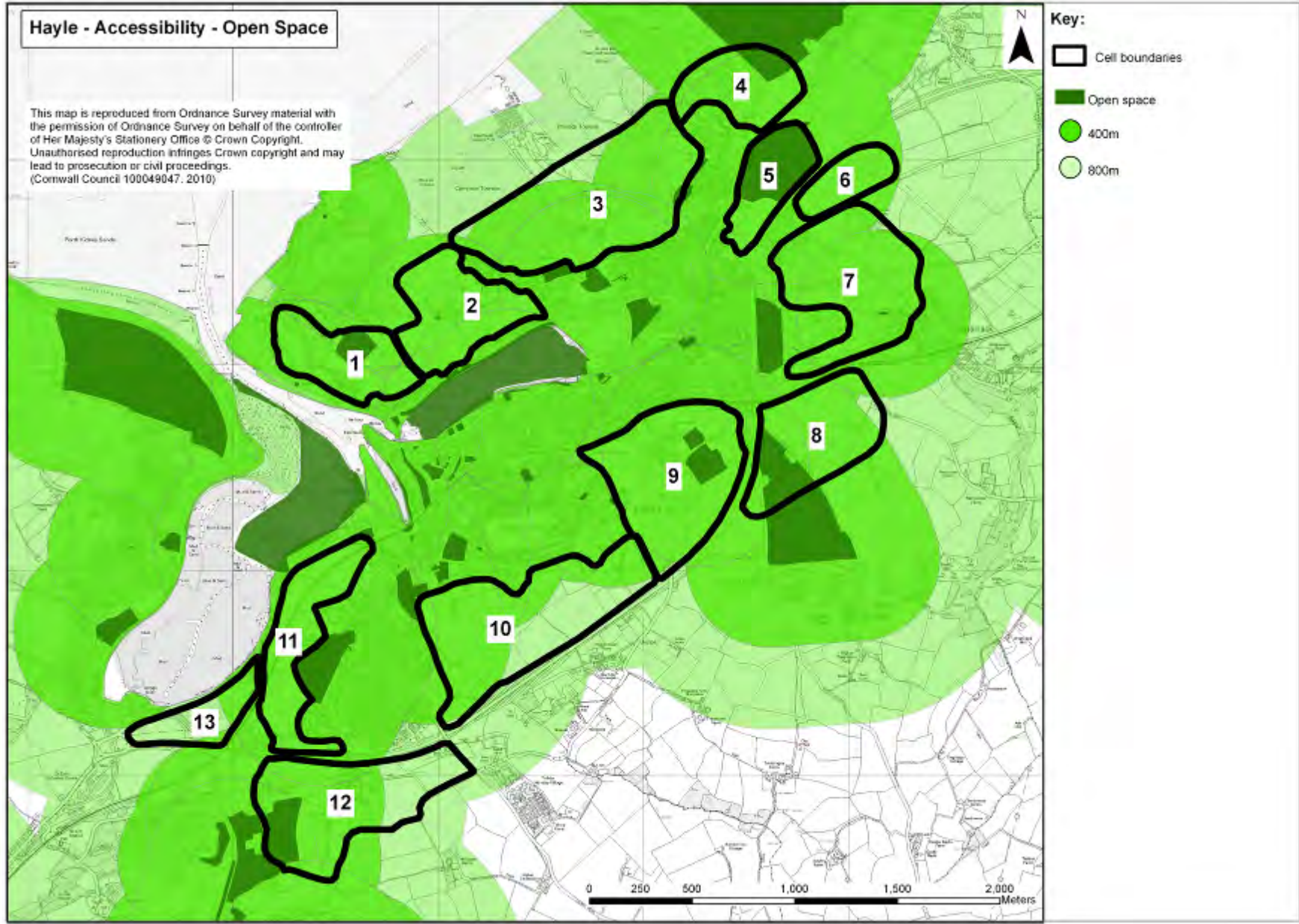
- Cell boundaries
- Health facility
- 400m
- 800m

This map is reproduced from Ordnance Survey material with the permission of Ordnance Survey on behalf of the controller of Her Majesty's Stationery Office © Crown Copyright. Unauthorised reproduction infringes Crown copyright and may lead to prosecution or civil proceedings. (Cornwall Council 100049047, 2010)



# Hayle - Accessibility - Open Space

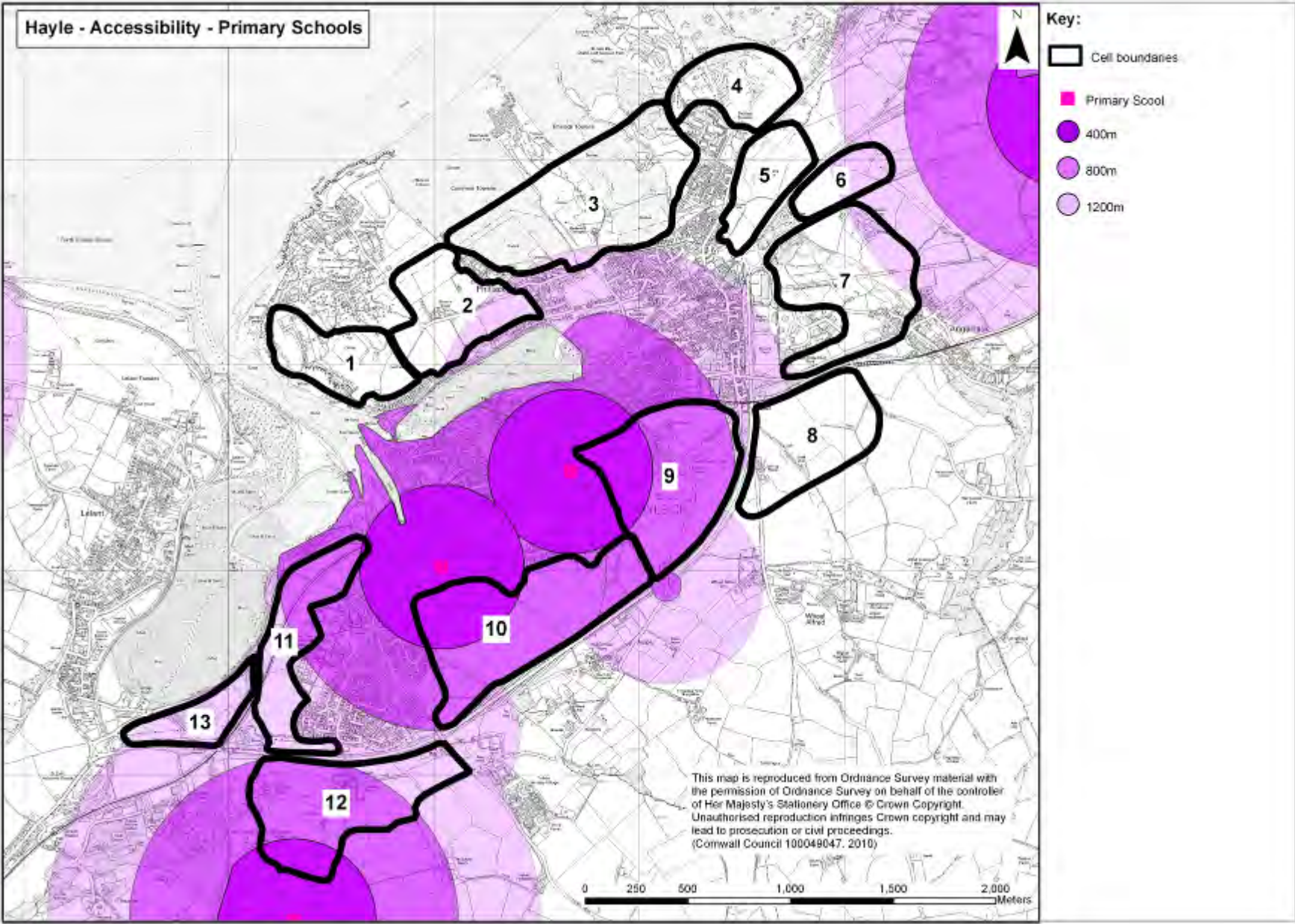
This map is reproduced from Ordnance Survey material with the permission of Ordnance Survey on behalf of the controller of Her Majesty's Stationery Office © Crown Copyright. Unauthorised reproduction infringes Crown copyright and may lead to prosecution or civil proceedings. (Cornwall Council 100049047, 2010)



### Key:

- Cell boundaries
- Open space
- 400m
- 800m

# Hayle - Accessibility - Primary Schools



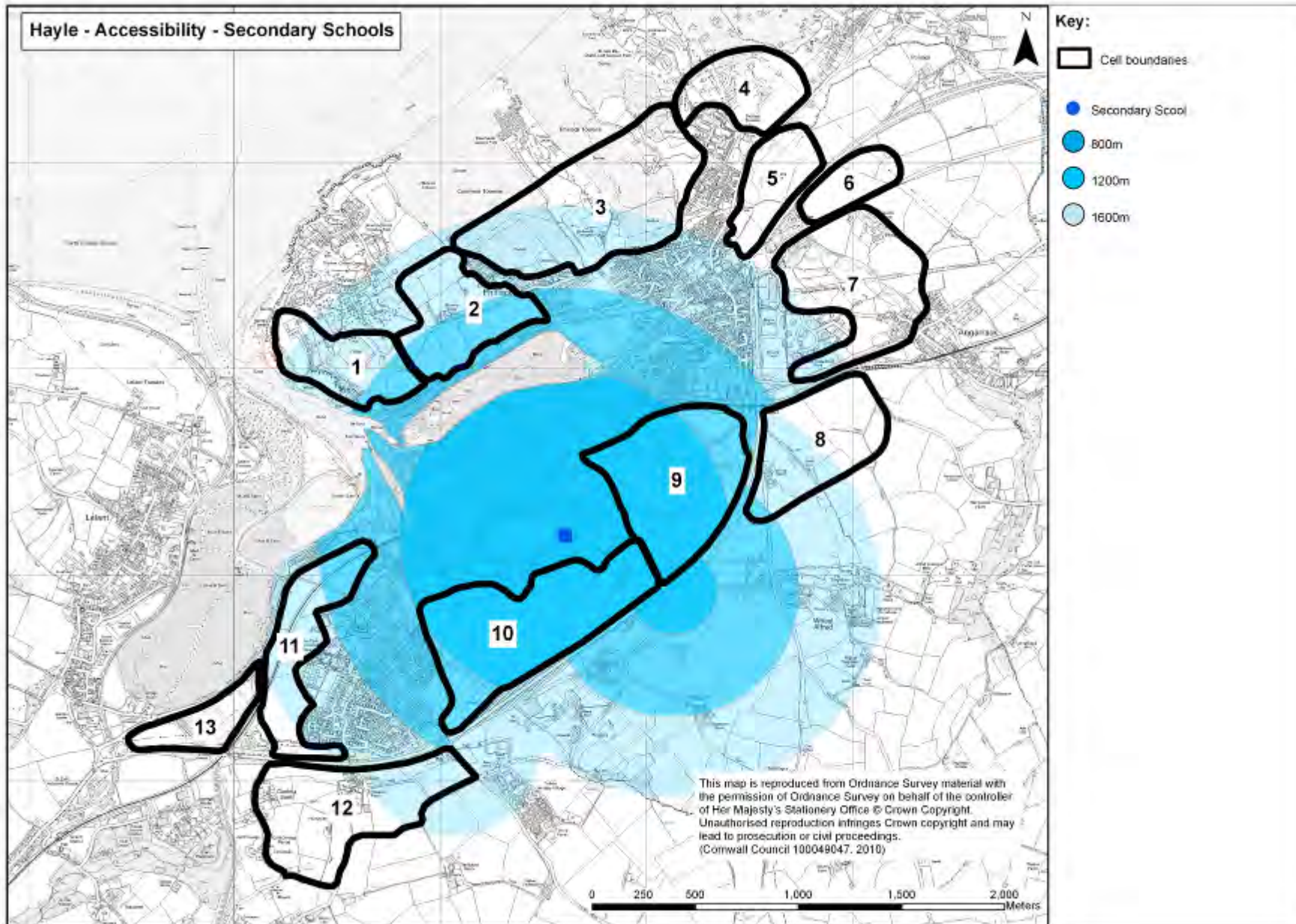
### Key:

- Cell boundaries
- Primary School
- 400m
- 800m
- 1200m

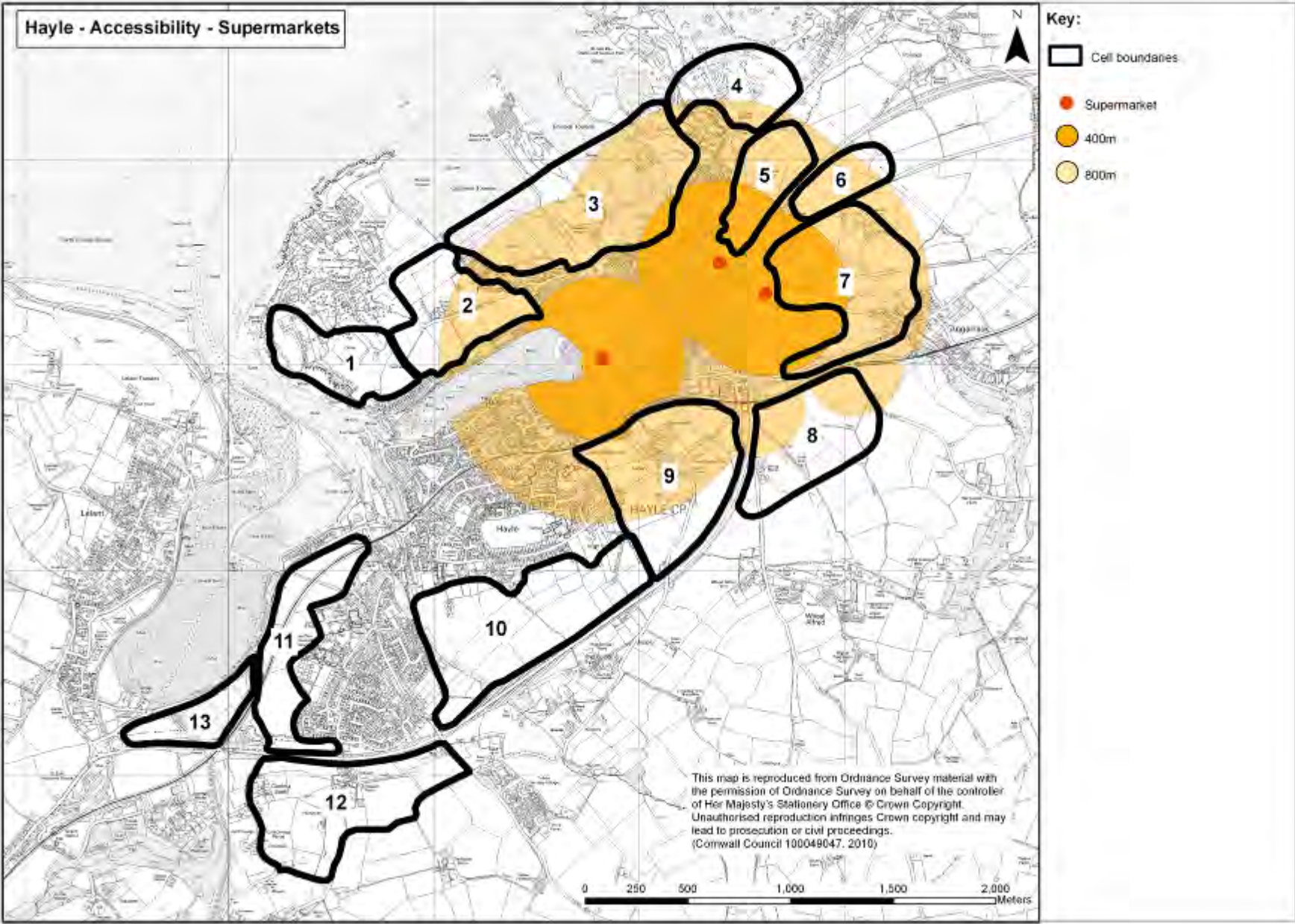
This map is reproduced from Ordnance Survey material with the permission of Ordnance Survey on behalf of the controller of Her Majesty's Stationery Office © Crown Copyright. Unauthorised reproduction infringes Crown copyright and may lead to prosecution or civil proceedings. (Cornwall Council 100049047, 2010)

0 250 500 1,000 1,500 2,000 Meters

# Hayle - Accessibility - Secondary Schools



# Hayle - Accessibility - Supermarkets



## Key:

- Cell boundaries
- Supermarket
- 400m
- 800m

This map is reproduced from Ordnance Survey material with the permission of Ordnance Survey on behalf of the controller of Her Majesty's Stationery Office © Crown Copyright. Unauthorised reproduction infringes Crown copyright and may lead to prosecution or civil proceedings. (Cornwall Council 100049047, 2010)

0 250 500 1,000 1,500 2,000 Meters

# Hayle - Accessibility - Town Centres

