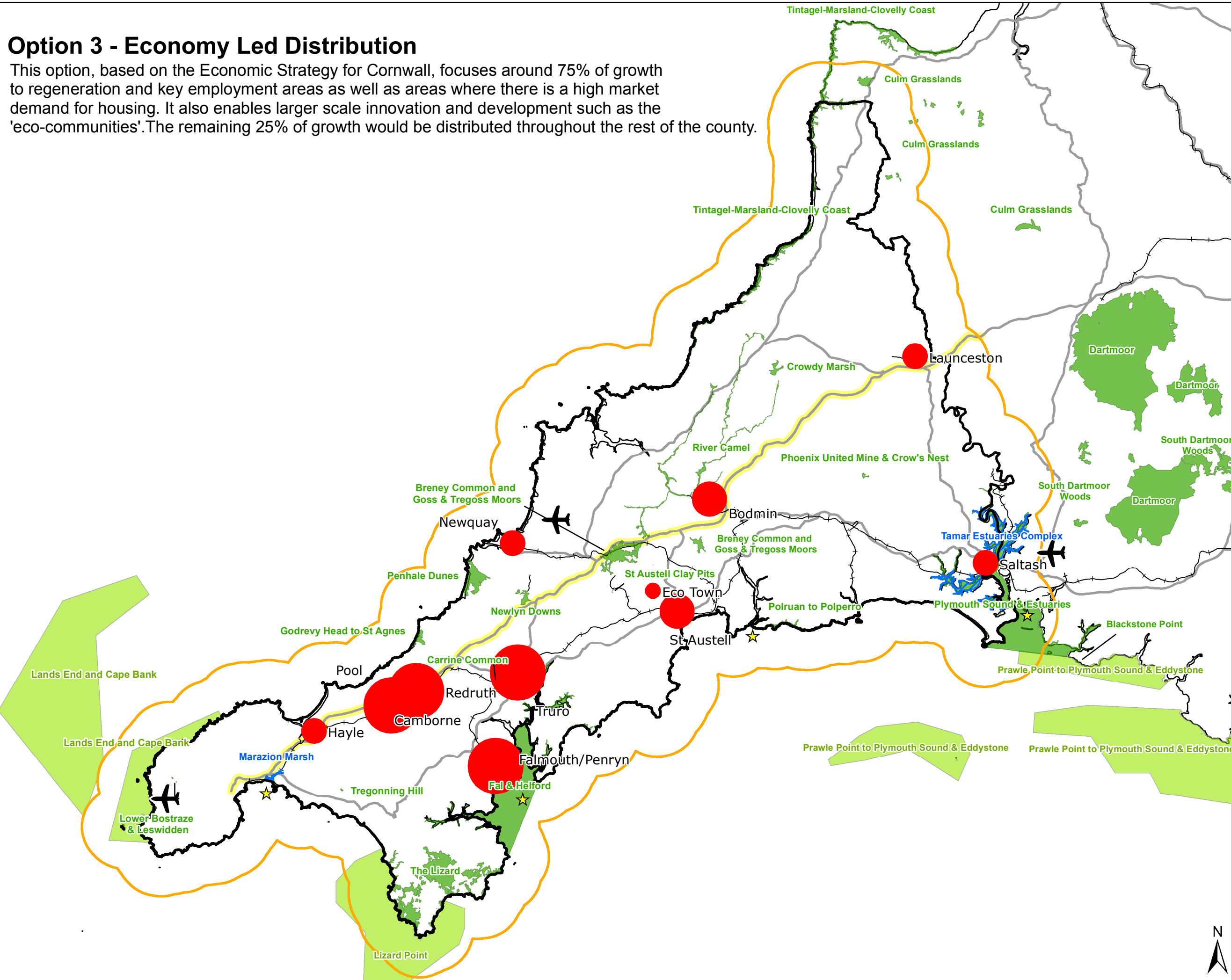


Option 3 - Economy Led Distribution

This option, based on the Economic Strategy for Cornwall, focuses around 75% of growth to regeneration and key employment areas as well as areas where there is a high market demand for housing. It also enables larger scale innovation and development such as the 'eco-communities'. The remaining 25% of growth would be distributed throughout the rest of the county.



NOTES

- Cornwall UA Core Strategy Area
- 5km Buffer of Cornwall UA
- Special Protection Areas (SPAs)
- Special Areas of Conservation (SACs)
- Candidate SACs
- Railway
- Primary road
- A30 Strategic Corridor
- Existing Ferry Ports
- Existing Main Airport

Copyright
 Contains Ordnance Survey Data © Crown Copyright and database right 2011
 © Natural England material is reproduced with the permission of Natural England 2011
 Settlement Options Source: Cornwall Council

Revision Details	By	Check	Date	Suffix

Drawing Status: **DRAFT**

Job Title: **HRA OF CORNWALL CS**



Drawing Title: **EUROPEAN DESIGNATED SITES OPTION 3: ECONOMY LED DISTRIBUTION**

Scale at A3: 1:450,000

Drawn	AH	Approved	GD
Stage 1 check	LP	Stage 2 check	JR

THIS DOCUMENT HAS BEEN PREPARED IN ACCORDANCE WITH THE SCOPE OF SCOTT WILSON'S APPOINTMENT WITH ITS CLIENT AND IS SUBJECT TO THE TERMS OF THAT APPOINTMENT. SCOTT WILSON ACCEPTS NO LIABILITY FOR ANY USE OF THIS DOCUMENT OTHER THAN BY ITS CLIENT AND ONLY FOR THE PURPOSES FOR WHICH IT WAS PREPARED AND PROVIDED.
 © SCOTT WILSON LTD 2011

Scott Wilson Ltd
 Scott House
 Alençon Link, Basingstoke
 Hampshire, RG21 7FP
 Telephone (01256) 310200
 Fax (01256) 310201
 www.urs-scottwilson.com

Drawing Number: **FIGURE 6** Rev