

Port Isaac Historic Development

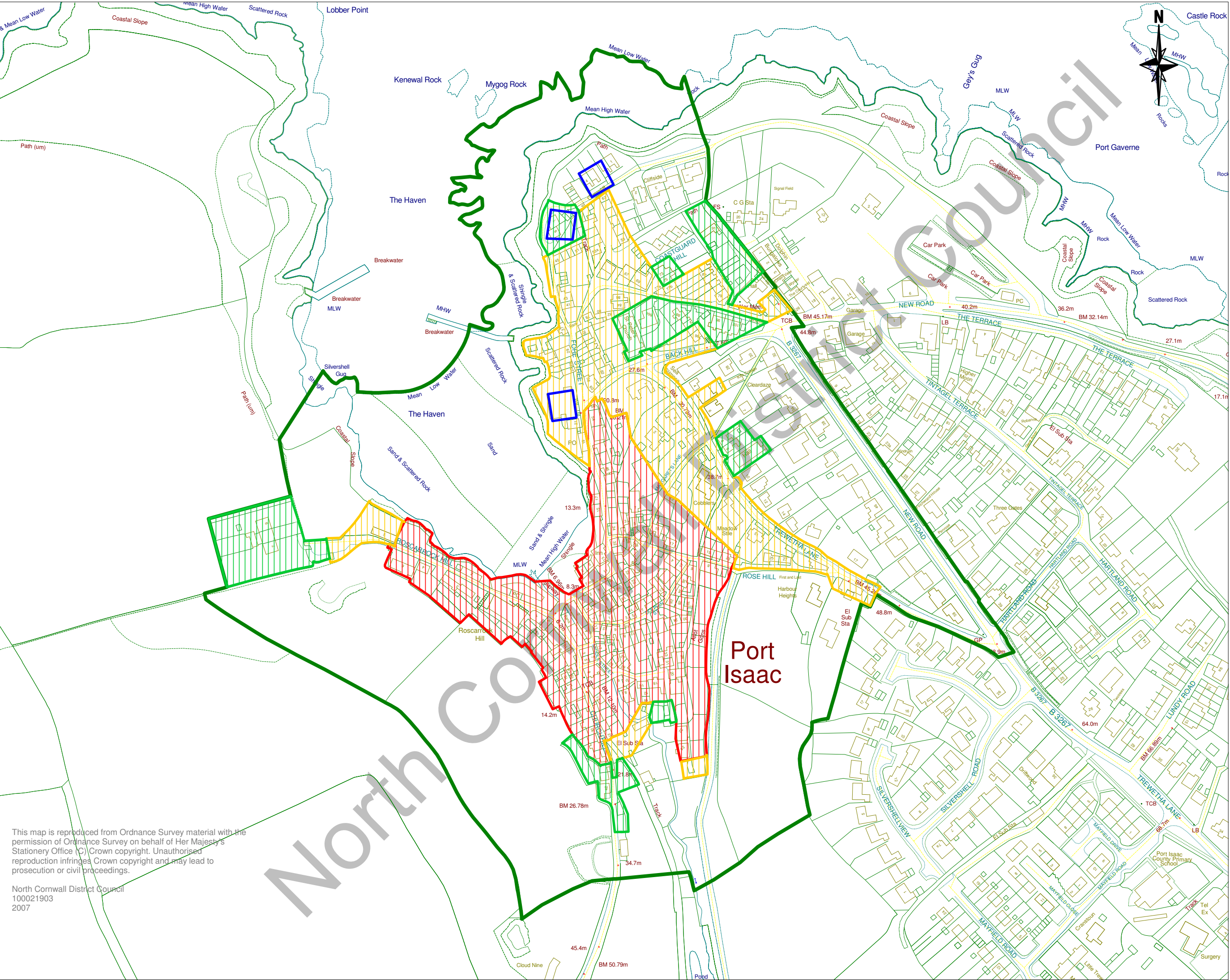
KEY

- Pre 1839
- Pre 1839 fish cellars (approx locations)
- 1839 – c 1880
- 1880 – c 1907

Scale: 1:2500

SW9980NE

11/12/2007



This map is reproduced from Ordnance Survey material with the permission of Ordnance Survey on behalf of Her Majesty's Stationery Office (C) Crown copyright. Unauthorised reproduction infringes Crown copyright and may lead to prosecution or civil proceedings.

North Cornwall District Council
100021903
2007