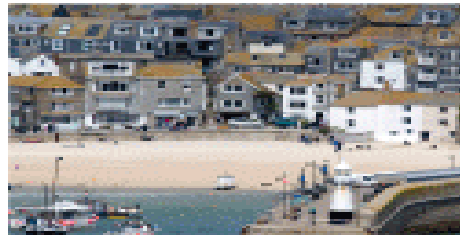
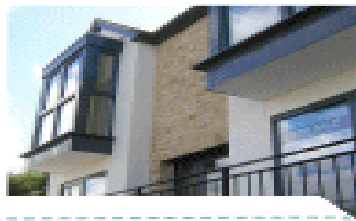


Neighbourhood Planning

Update • August 2018

Quick links

- [Current Consultations](#) • [Government Legislation](#)
- [Toolkit and guide notes](#) • [Other Information](#)
- [Town, Parish & City Council Online Mapping](#)



Welcome to the Neighbourhood Planning e-bulletin for August 2018

It's your last chance to sign up to our quarterly NDP surgeries which will be held in September. This gives Steering Groups the opportunity to speak to Planning Policy Officers and ask any questions. Further information can be seen below.

Neighbourhood Planning Team

www.cornwall.gov.uk

Neighbourhood Planning Surgeries September 2018

You can book a slot for the next round of Neighbourhood Planning Surgeries being organised in September. This will provide Neighbourhood Planning Steering Groups with an opportunity to speak to Neighbourhood Planning and Planning Policy officers about any queries and be provided with some guidance on the development of their Plan. Each steering group can book a 45 minute slot which will need to be booked in advance. If you are interested in attending one of the surgeries please e-mail the Neighbourhood Planning Team

neighbourhoodplanning@cornwall.gov.uk stating which location you would wish to attend and whether you would prefer to attend a morning or afternoon.

The next round of Surgeries will be held on the following dates between 9am – 4pm:

- Pydar House, Truro – Friday 7th September.
- Penwinnick House, St Austell – Wednesday 19th September.
- Dolcoath, Camborne – Friday 21st September.
- Chy Trevail, Bodmin – Monday 24th September.
- Luxstowe House, Liskeard – Wednesday 26th September.
- St Johns Hall, Penzanze – Available upon request.

Neighbourhood Planning in Cornwall

126

**Town and Parish Councils
 submitted Designation
 Applications**

113

Designated Areas

This includes 5 cluster Neighbourhood Plans where two or more parishes are working together.

36

**Pre-Submission Consultations
 held**

St Eval, Quethiock, Roseland Peninsula, St Ives, St Cleer, Bude-Stratton, St Minver Parishes, Rame Peninsula, Roche, Mevagissey, Gwinear-Gwithian, Feock, Withiel, North Hill, South Hill, St Erth, Liskeard, Falmouth, Lanlivery, Lanreath, St Mewan, Crantock, Hayle, Landrake and St Erney, Newquay, Lanner, Wadebridge with Egloshayle and St Breock, Illogan, Lostwithiel, Luxulyan, Polperro and Lansallos, St Agnes, Landulph, St Stephens by Launceston, Gwennap

Upcoming Consultation Events

Please can you let us know if you have any consultation events coming up in the near future. We will advertise these events in our latest e-bulletin which will hopefully raise the awareness of the event and increase the turnout.

GDPR

The General Data Protection Regulation (GDPR) forms part of the data protection regime in the UK, together with the new Data Protection Act 2018 (DPA 2018). The main provisions of this apply, like the GDPR, from 25 May 2018.

NDP groups will need to check that their practices and consultations are GDPR compliant.

Designations:

From the 1st October 2016, local authorities no longer need to publish designation applications and consult people who live, work or carry out business in the area as long as the application is in conformity with the parish boundary as set out in the Neighbourhood Planning Regulations 2012/16 5A (3).

Cornwall Council will continue to consult statutory organisations when designation applications are submitted. A report will be collated providing initial information and guidance from these organisations to support town or parish councils during the early stages of developing their Neighbourhood Plan.

Cornwall Council has approved a designation request from:

[St Veep](#) Parish Council for their Neighbourhood area.

28

Plan Proposals Submitted

St Eval, Quethiock, Roseland Peninsula, St Ives, Truro and Kenwyn, St Minver Parishes, Bude-Stratton, Roche, Rame Peninsula, Gwinear-Gwithian, North Hill, South Hill, Lanreath, Feock, Mevagissey, St Erth, Withiel, Liskeard, St Mewan, Crantock, Hayle, Lanlivery, Landrake with St Erney, Newquay, Lanner, Polperro and Lansallos, Illogan, Lostwithiel

21

Examinations held

St Eval, Quethiock, Roseland Peninsula, St Ives, Truro and Kenwyn, St Minver Parishes, Roche, Bude-Stratton, Rame Peninsula, Gwinear – Gwithian, North Hill, Lanreath, South Hill, Feock, Withiel, St Mewan, Mevagissey, Crantock, Hayle, St Erth, Liskeard

20

Referendums held

St Eval, Quethiock, Roseland Peninsula, St Ives, Truro & Kenwyn, Bude – Stratton, Rame Peninsula, St Minver Parishes, Roche, Gwinear-Gwithian, North Hill, South Hill, Lanreath, Feock, Withiel, St Mewan, Crantock, Hayle, St Erth, Mevagissey

Strategic Environmental Assessment Screening (SEA):

[Chacewater NDP](#) is currently being screened for SEA.

Pre-Submission Consultation:

[Crowan NDP](#) consultation runs until 31 August 2018.

Plan Proposals Statutory Consultation:

[Illogan NDP](#) has been formally submitted to Cornwall Council and is currently going through a legal compliance check.

[Lostwithiel NDP](#) has gone through its legal compliance check. It will begin its Regulation 16 consultation on 29 August and finish on 10 October.

[Lanner NDP](#) will finish its Regulation 16 consultation on 6 September.

[Polperro and Lansallos NDP](#) will finish its Regulation 16 consultation on 7 September.

Examination:

[Newquay NDP](#) is currently at examination. The independent Examiner is Deborah McCann.

[Landrake with St Erney NDP](#) is currently at examination. The independent Examiner is Barbara Maksymiw.

[Lanlivery NDP](#) is currently at examination. The independent Examiner is Barbara Maksymiw.

20

Made Plans

St Eval, Quethiock, Roseland Peninsula, St Ives, Truro and Kenwyn, Bude – Stratton, Rame Peninsula, Roche, St Minver Parishes, Gwinear-Gwithian, North Hill, South Hill, Lanreath, Feock, Withiel, St Mewan, Crantock, Hayle, St Erth, Mevagissey

Contact us

For more information or if you would like to contact us please email the [Neighbourhood Planning Team](#).

Neighbourhood Planning Toolkit links

- [Neighbourhood Planning in Cornwall](#)
- Neighbourhood Planning news and events [Link no longer available]
 - Neighbourhood Area Designation [Link no longer available]
- [Neighbourhood Development Plan Proposals](#)
- [Neighbourhood Planning Examinations and Referendums](#)
- [Neighbourhood Planning Guide Notes and Templates](#)

Referendum:

[Liskeard NDP](#) has finished its examination and will go to referendum. Date to be confirmed.

Made Neighbourhood Plans:

[Mevagissey NDP](#) was formally made by Cornwall Council on 9 July 2018.

Toolkit and Guidance Notes

We have a number of new [guidance notes](#) available on the toolkit including:

- [Wildlife, trees and woodland](#)
- [Sustainability Check \(Report Template and Guidance\)](#)
- [Design](#)
- [Flooding and Drainage](#)
- [Equalities Impact Assessment \(EQIA\)](#)
- [Principal Residence Policies](#)
- [Funding and Support](#)
- [Updated NDP Template](#)

Government Legislation

Draft Revised National Planning Policy Framework

The [draft revised NPPF](#) and [draft guidance on Supporting housing delivery through developer contributions](#) have been published for consultation alongside additional draft planning practice guidance and a housing delivery test measurement rulebook. Further draft planning practice guidance is imminent. The draft revised NPPF incorporates policy proposals previously consulted on in the Housing White Paper and the Planning for the right homes in the right places consultation plus other changes.

Useful web links

- [My Community](#)
- [Neighbourhood Planning Bill](#)
- [Cornwall Local Plan](#)
- [Neighbourhood Planning Roadmap Guide](#)
- [Neighbourhood Planning Regulations](#)
- [National Planning Policy Framework](#)
- [Upfront bulletin](#)
- [Cornwall Community Network Areas](#)

Other Information

Town, Parish & City Council Online Mapping

For those groups who have not already signed up, Cornwall Council is now offering town and parish councils and the city council a free mapping website designed to help with:

- Emergency plans
- Neighbourhood plans
- Devolution
- Planning
- Paperless Planning
- Any other local council business

The useful website mapping gives addresses of facilities ranging from libraries, doctors and schools, to transport infrastructure like bus stops, public rights of way and speed limits. It helps you find out if your area has environmental designations like conservation zones, see important information like flood risks zones, and heritage information like monument sites.

There are a wide range of layers that can be added onto the online map giving you other helpful information; including information about education, environment, housing, heritage and green spaces when you select the appropriate tab. For example, under education you could see where schools are and under environment you could show Areas of Outstanding Natural Beauty in Cornwall.

Other benefits include being able to view aerial photos, linking to Google Street View, measuring areas and distances, as well as getting the OS grid reference for any location in Cornwall.

To benefit from the free website mapping Town and Parish Councils must sign up to the Ordnance Survey Public Sector Mapping Agreement at <https://www.ordnancesurvey.co.uk/business-and-government/public-sector/town-parish-community-councils.html>. Once you've signed up to the agreement your council will be sent a user name and password so you'll be able to use the website for up to three years.

If you're interested in this opportunity please email neighbourhoodplanning@cornwall.gov.uk for the Guidance Note and your login and password details.

Some of the information on this bulletin is taken from the Locality website.