

# WINTER WELLBEING 2016/17

Winter Wellness 2016/17, funded by Public Health, Inclusion Cornwall, Council of the Isles of Scilly, Community Energy Plus, Cornwall Rural Community Charity and Cornwall Community Foundation (CCF). **Over 30 partners** including NHS worked together to deliver common outcomes of reducing fuel poverty, improving health and progress to work. Community Energy Plus run the Freephone advice line **0800 954 1956**

## Key highlights

**1,439** called the Community Energy Plus Freephone

**444** referred to other partners for assistance



**318** homes had central heating (CHF) for the first time ... staying warmer for less

**797** received energy advice

**254** households assisted by Winter Wellness Emergency Fund

**25** helped by Plymouth Energy Community (energy debts)

**198** had Smart Warmth help (CEP)

**700** reached by CRCC energy advice sessions

**61** CHF recipients, supported by Smart Warmth



## Wider health benefits

**63** hospital admissions prevented

 saving NHS **£61,000**

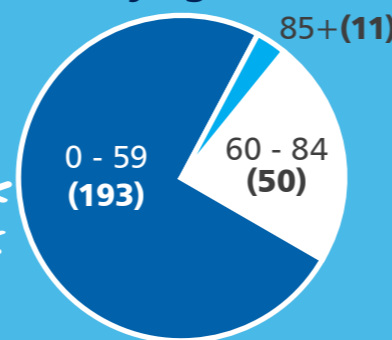
 **£1** spent on Winter Wellness

Surviving Winter (CCF) offered **£2,500** support to Winter Wellness (Every £1 from CCF equated to £2.44 of Winter Wellness)

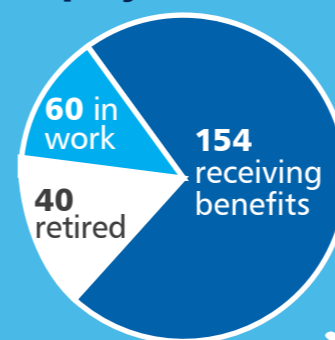
 saves the NHS **£3.15**



By age



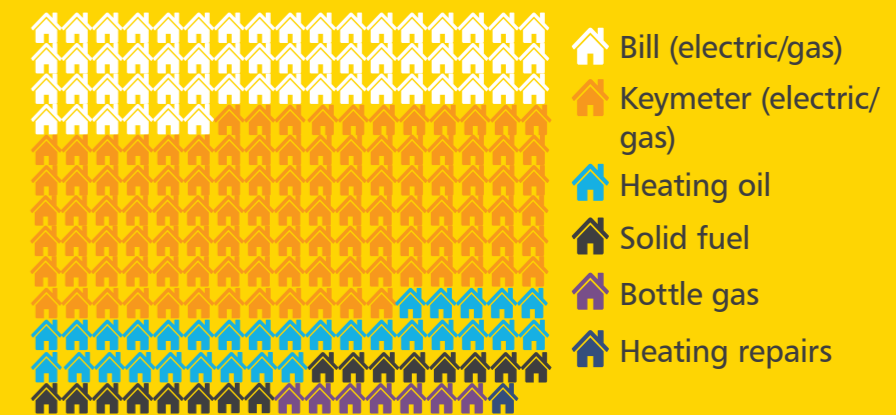
By employment status



## Top 5 health reasons for applying

- ♥ mental health
- ♥ musculoskeletal/arthritis
- ♥ asthma
- ♥ children in cold homes
- ♥ heart/obstructive illnesses

Winter Wellness Emergency fund helped **15** households on Isles of Scilly and **239** in Cornwall, to stay warm and well, in the following ways:



## Work outcomes

**348** supported to go back to work, remain in or progress to work (pre follow up... likely to increase)

## Improved health - reduced money worries

59 received other Cornwall Council Discretionary Funds, that helped to improve their income, health and reduce money worries

