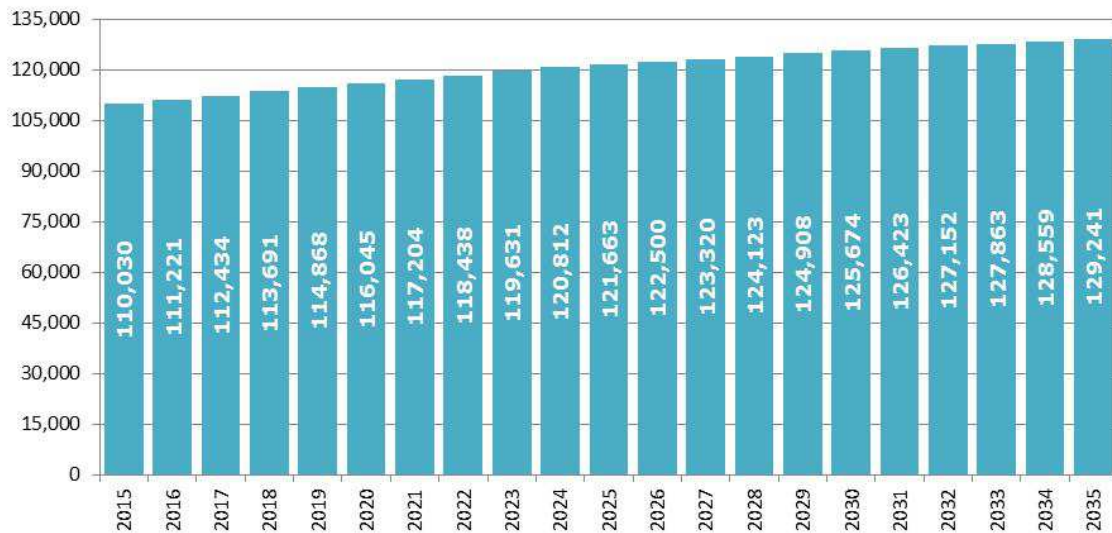


Former Restormel District

Local Projections (September 2016)

This summary introduces the scale of forecasted population change across the former Restormel District area. It utilises population projections commissioned by Cornwall Council from Edge Analytics (POPGROUP) which incorporate the Council's housing growth targets set out within the Local Plan.

Total Population Growth 2015-35



Ranking of % Growth 2015-25 by Former District

	Highest			Lowest		
2015-20	Kerrier 6.37% (6,068)	Restormel 5.47% (6,015)	Carrick 5.05% (5,344)	N.Cornwall 3.55% (3,218)	Penwith 2.70% (1,770)	Caradon 1.24% (1,030)
2020-25	Carrick 5.53% (6,142)	Kerrier 5.34% (5,413)	Restormel 4.84% (5,618)	N.Cornwall 3.80% (3,569)	Penwith 2.43% (1,638)	Caradon 1.61% (1,350)
2025-30	Carrick 5.29% (6,202)	N.Cornwall 3.56% (3,468)	Kerrier 3.42% (3,651)	Restormel 3.30% (4,011)	Caradon 1.50% (1,280)	Penwith 0.56% (385)
2030-35	Carrick 4.84% (5,970)	N.Cornwall 3.14% (3,176)	Kerrier 2.98% (3,294)	Restormel 2.84% (3,567)	Caradon 0.89% (772)	Penwith -0.04% (-25)

Projected Population by Age Band 2015-25

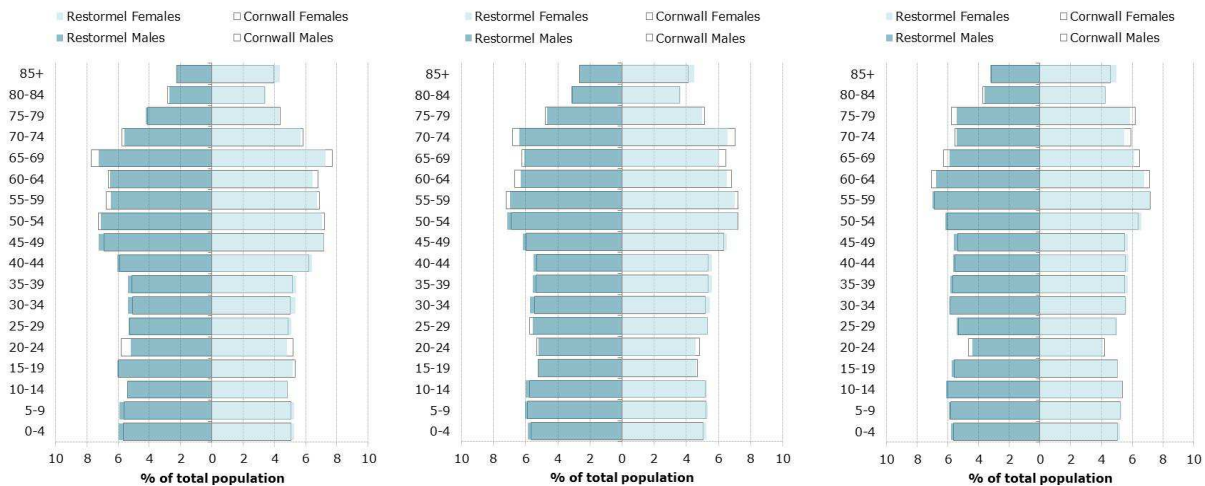
AGE	MALE			FEMALE		
	2015	2020	2025	2015	2020	2025
0-4	3,191	3,299	3,425	2,984	3,129	3,250
5-9	3,167	3,408	3,506	2,984	3,165	3,302
10-14	2,907	3,387	3,618	2,734	3,150	3,326
15-19	3,239	2,925	3,390	2,919	2,762	3,155
20-24	2,775	2,926	2,605	2,715	2,736	2,556
25-29	2,856	3,131	3,198	2,878	3,168	3,135
30-34	2,863	3,229	3,478	3,015	3,256	3,521
35-39	2,871	3,131	3,468	3,052	3,334	3,558
40-44	3,251	3,100	3,351	3,622	3,323	3,596
45-49	3,871	3,476	3,311	4,054	3,888	3,581
50-54	3,803	4,040	3,648	3,973	4,286	4,118
55-59	3,457	3,930	4,155	3,807	4,166	4,466
60-64	3,494	3,550	4,019	3,639	3,881	4,241
65-69	3,876	3,429	3,497	4,110	3,598	3,839
70-74	2,989	3,615	3,221	3,193	3,906	3,431
75-79	2,253	2,624	3,208	2,440	2,974	3,650
80-84	1,458	1,782	2,132	1,937	2,178	2,666
85-89	806	971	1,229	1,436	1,498	1,724
90+	400	509	693	1,012	1,185	1,397
All ages	53,526	56,463	59,152	56,504	59,581	62,511

Restormel Former District Population Pyramids

2015

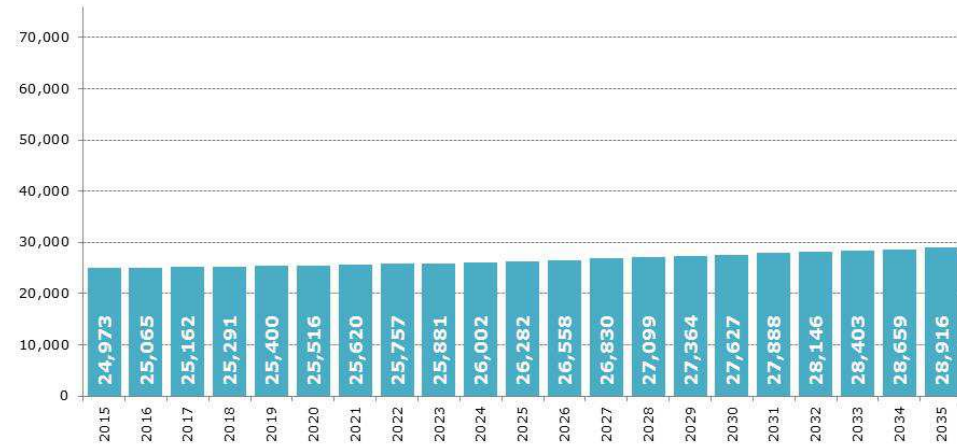
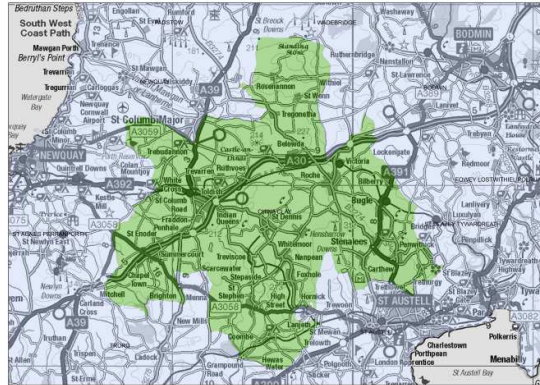
2020

2025

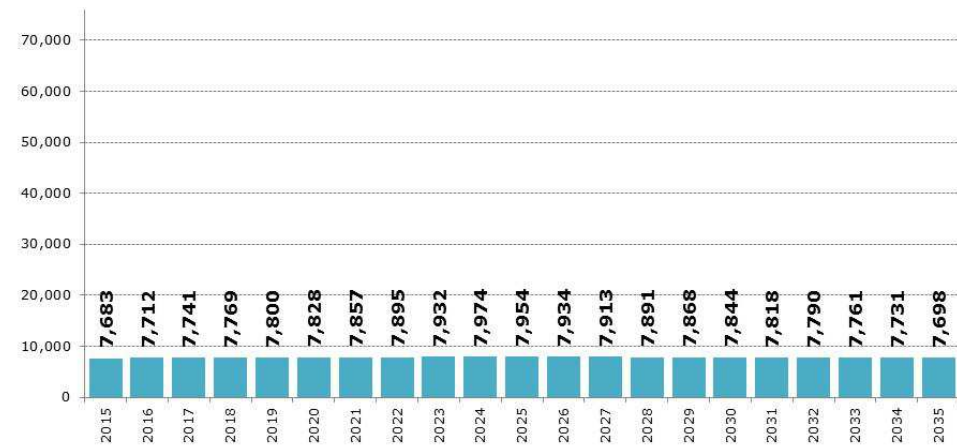
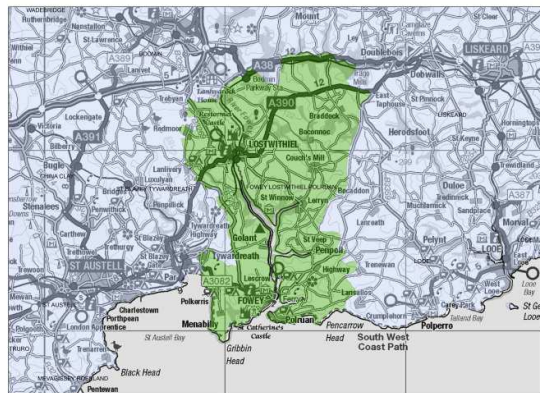


Small Areas Statistics for Areas within the Former Restormel District Area

China Clay

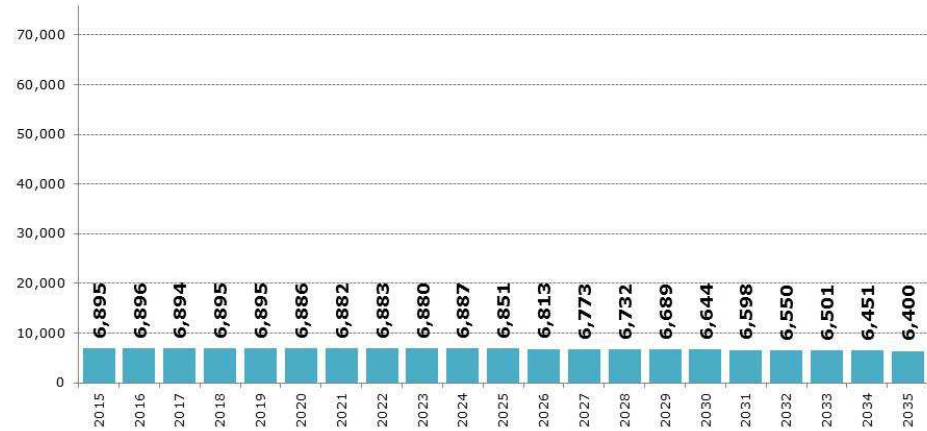
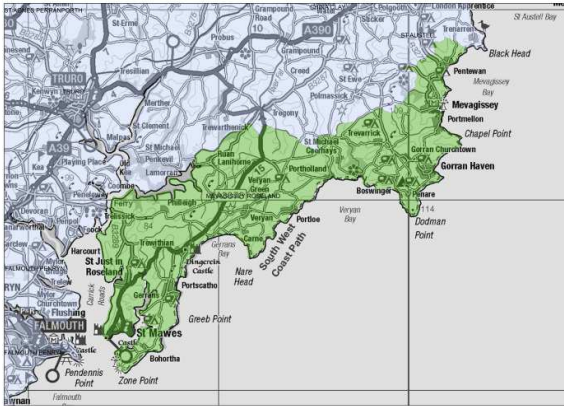


Fowey

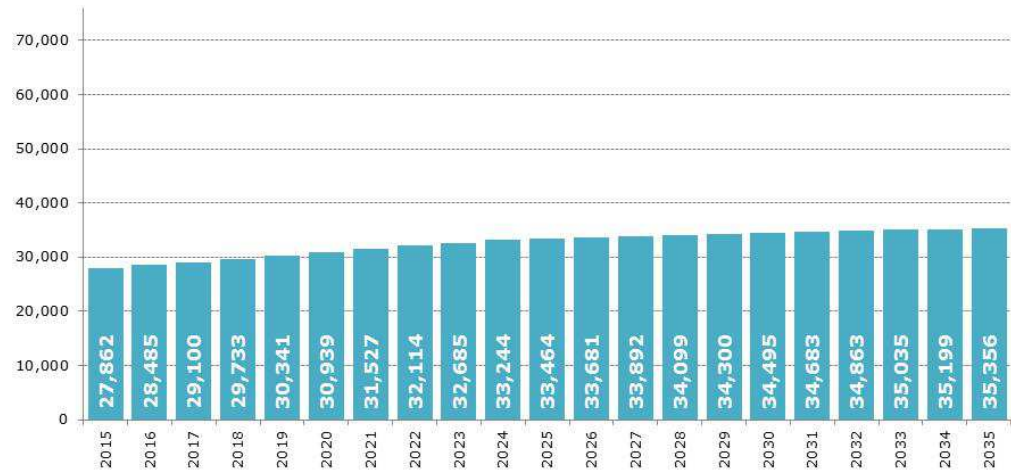
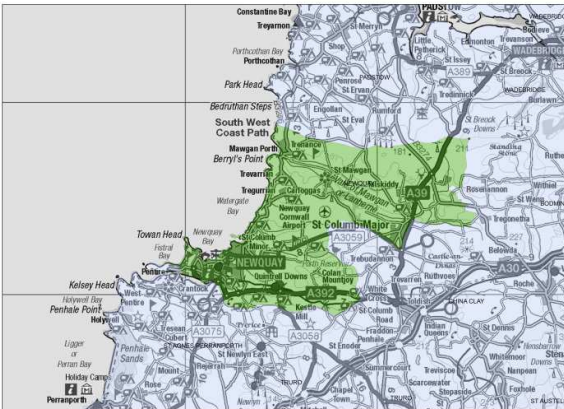


Joint Strategic Needs Assessment

Mevagissey

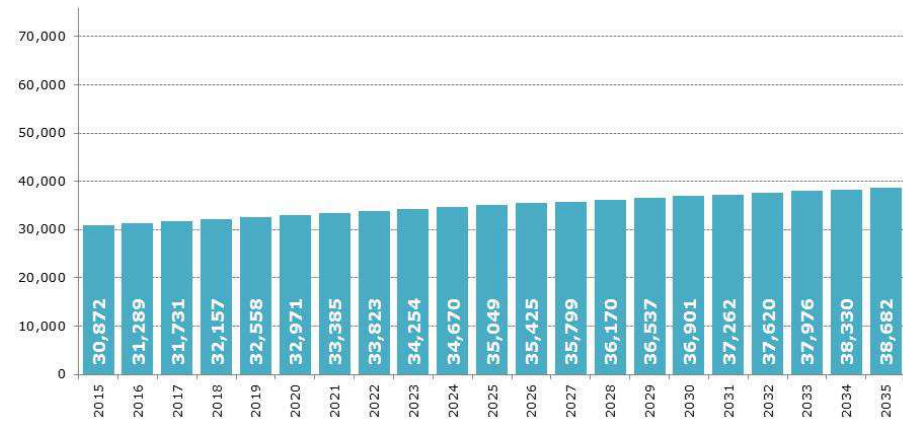
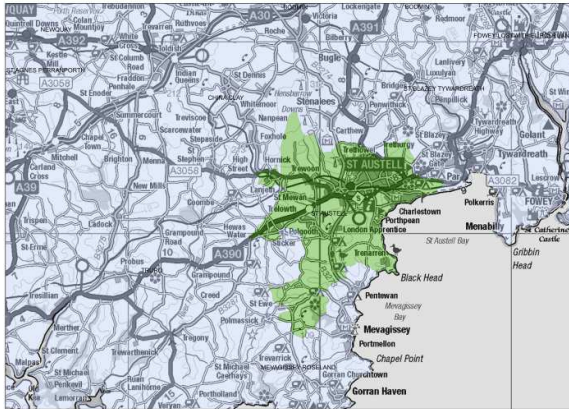


Newquay



Joint Strategic Needs Assessment

St Austell



St Blazey

