

The information in this profile is intended to provide an overview of the population within this Community Network Areas. This profile forms part of a range of themed profiles produced by the Cornwall Council Community Intelligence Team.

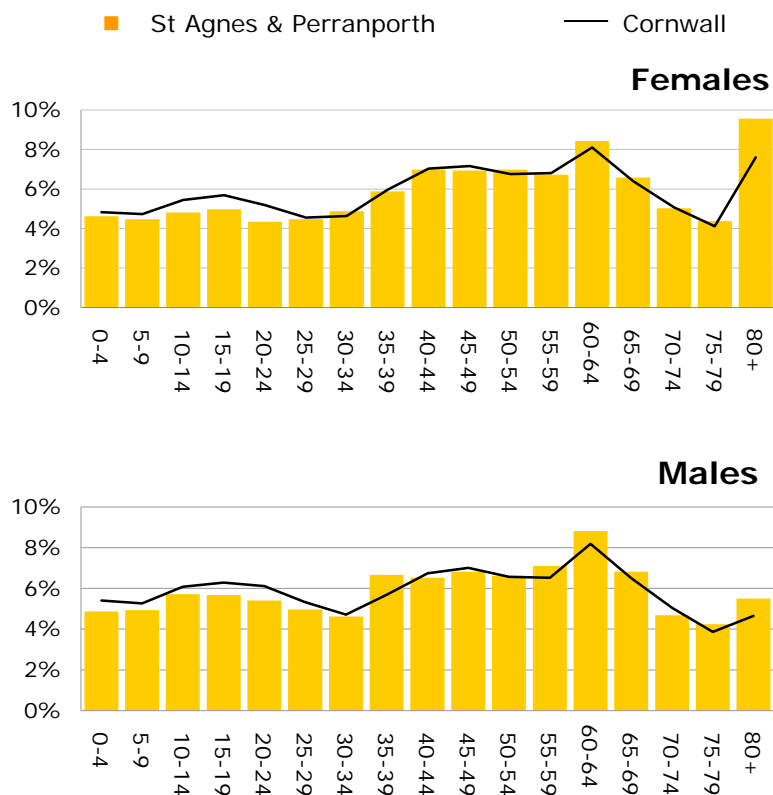
Population

	St Agnes & Perranporth	Cornwall
Population (2010)	17,400	535,300
Population change (2001-10)	+6%	+7%
Area (hectares)	12,453	354,595
Population density	1.40	1.51

Estimated Age Structure 2010

Age	Males	Females
0-4	410	420
5-9	410	410
10-14	480	440
15-19	470	450
20-24	450	390
25-29	420	410
30-34	390	440
35-39	560	530
40-44	550	630
45-49	570	630
50-54	550	630
55-59	600	610
60-64	740	760
65-69	570	600
70-74	390	460
75-79	360	400
80+	460	870

% population by gender and age group

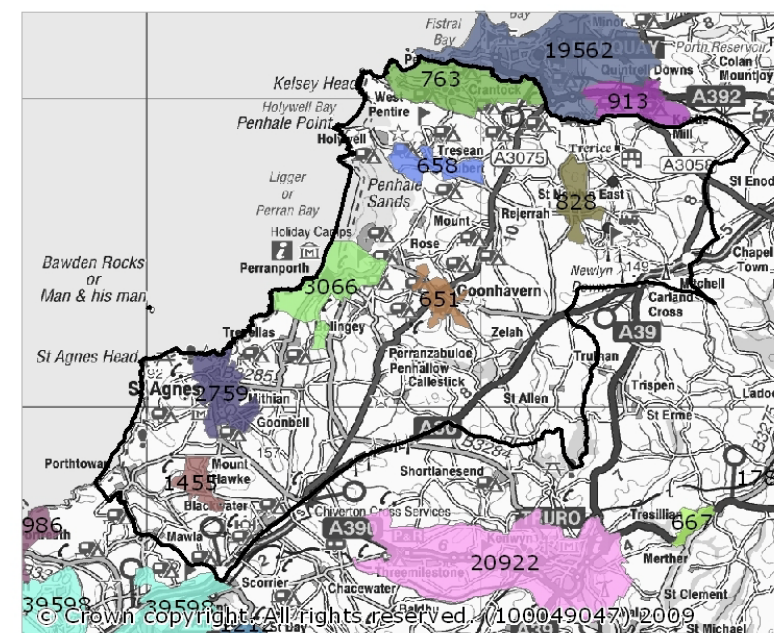


Population by Settlement (2001 Census)

The map below shows the population of the main settlements within this Community Network (population shown in brackets).

Boundaries have been defined locally using Census Output Areas.

The map shows the main settlements as coloured areas, with smaller settlements as points.



Source: Office for National Statistics

Ethnicity

Ethnicity is measured for the 2001 Census. This data is no longer current and is a considerable undercount black and minority ethnic groups. It is however the only count of minority ethnic groups available.

	St Agnes & Perranporth	Cornwall
White	16,296 99.3%	99.0%
Mixed	57 0.3%	0.5%
Asian or Asian British	23 0.1%	0.2%
Black or Black British	19 0.1%	0.2%
Chinese or Other Ethnic Group	24 0.1%	0.2%

Dependency ratio (2008)

The dependency ratio tells us how many young people (under 16) and older people (65 and over for males and 60 and over for females) depend on people of working age (16 to 64).

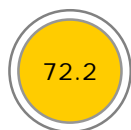
A higher dependency ratio reflects more people who are not of working age, and fewer who are working and paying taxes. The higher the number the more people that need looking after.

For example, a dependency ratio of 70 means that 100 working age people provide for 70 dependants; young people (under 16) and people aged 65+.

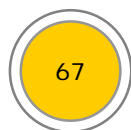
St Agnes & Perranporth



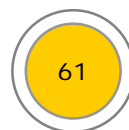
Cornwall



South West



England



St Agnes & Perranporth has a lower dependency ratio than Cornwall. This means that there are fewer people in the younger and older age groups compared to the county average.

Position in relation to other network areas

The following section shows the network area's position in relation to the 19 community networks. The horizontal line indicates the Cornwall average.

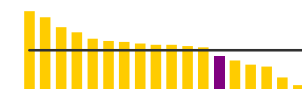
Population



17/19

Highest: Camborne & Redruth (60100)
Lowest: Camelford (12200)

Population change 01 -09



13/19

Highest: China Clay (13%)
Lowest: Penzance (1%)

Population Density



10/19

Highest: Camborne & Redruth (5)
Lowest: Camelford (0.5)

% BME



16/19

Highest: Truro & Roseland (1.59%)
Lowest: Liskeard & Looe (0.51%)

Dependency ratio



8/19

Highest: Wadebridge & Padstow (78.2)
Lowest: Newquay (59.4)

Sources and Notes:

Dataset	Period	Source
Population	2010 2001	Office for National Statistics, mid year estimates Census, Table UV01
Area (hectares)	2001	Census, Table UV02
Age structure	2009	Office for National Statistics, mid year estimates
Population by Settlement	2001	Census, Table UV01 Settlement boundaries built from Census Output areas as defined by C4G Planning for the Role and Future of Smaller Settlements in Cornwall'
Ethnicity	2001	Census, Table UV09
Dependency ratio	2009	Calculated using the Office for National Statistics mid year estimates

Profiles produced by Cornwall Council Community Intelligence Team, in partnership with Cornwall and Isles of Scilly Primary Care Trust.
Room 203, New County Hall, Treyew Road, Truro, Cornwall, TR1 3AY
Tel: 0300 1234 100, email: intelligence@cornwall.gov.uk